



WISCONSIN
FAH MEMBER FACILITIES

SENATE

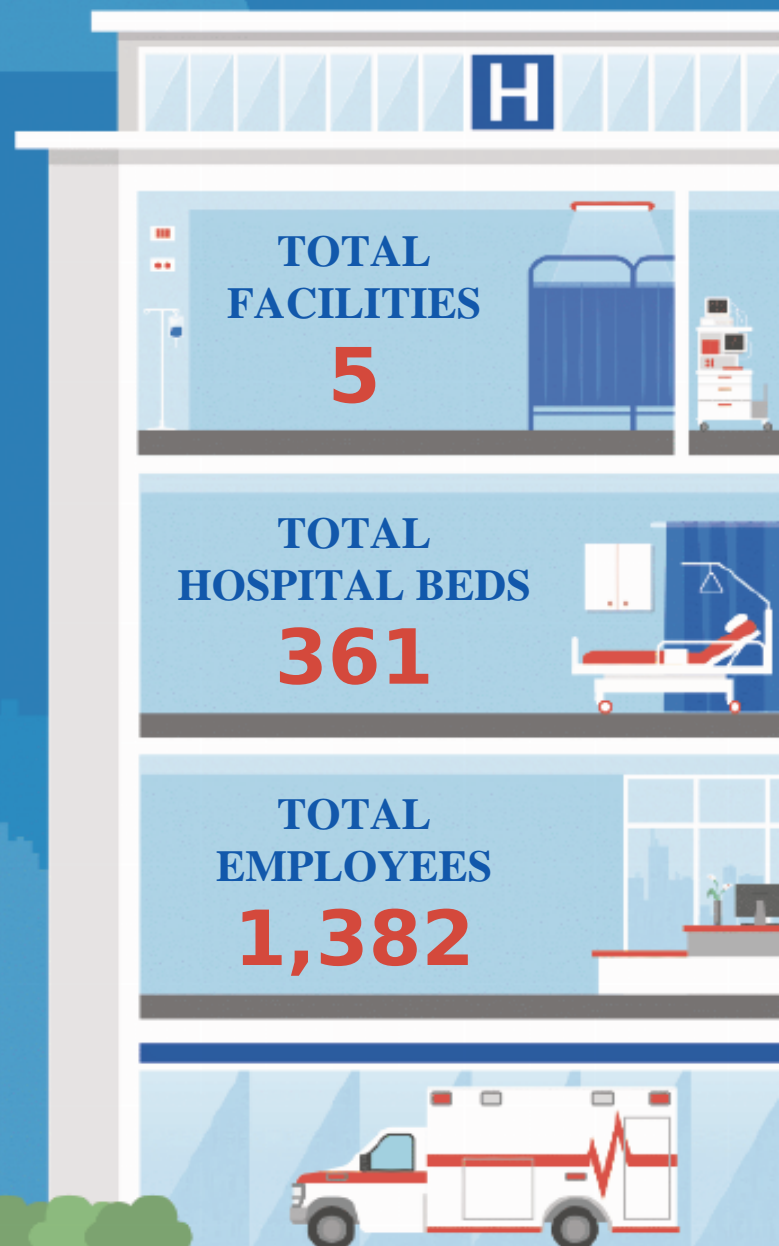
Sen. Ron Johnson (R)
Sen. Tammy Baldwin (D)

HOUSE *(Click name to view the district)*

Rep. Mark Pocan (D) / Wisconsin 2nd
Rep. Gwen Moore (D) / Wisconsin 4th
Rep. Scott Fitzgerald (R) / Wisconsin 5th



Federation of American Hospitals represents America's tax-paying community hospitals and health systems.





REP. MARK POCAN (D) / WISCONSIN 2ND

2 HOSPITALS

Encompass Health Rehabilitation Hospital of Fitchburg	Fitchburg	Encompass Health	56	191
UW Health Rehabilitation Hospital	Madison	Lifepoint Health	50	211

REP. GWEN MOORE (D) / WISCONSIN 4TH

1 HOSPITAL

Granite Hills Hospital	West Allis	UHS	120	272
------------------------	------------	-----	-----	-----

REP. SCOTT FITZGERALD (R) / WISCONSIN 5TH

2 HOSPITALS

Rehabilitation Hospital of Wisconsin	Waukesha	Lifepoint Health	40	252
Watertown Regional Medical Center	Watertown	ScionHealth	95	456