



# WASHINGTON

## FAH MEMBER FACILITIES

### SENATE

Sen. Maria Cantwell (D)

Sen. Patty Murray (D)

### HOUSE *(Click name to view the district)*

Rep. Suzan DelBene (D)/ Washington 1st

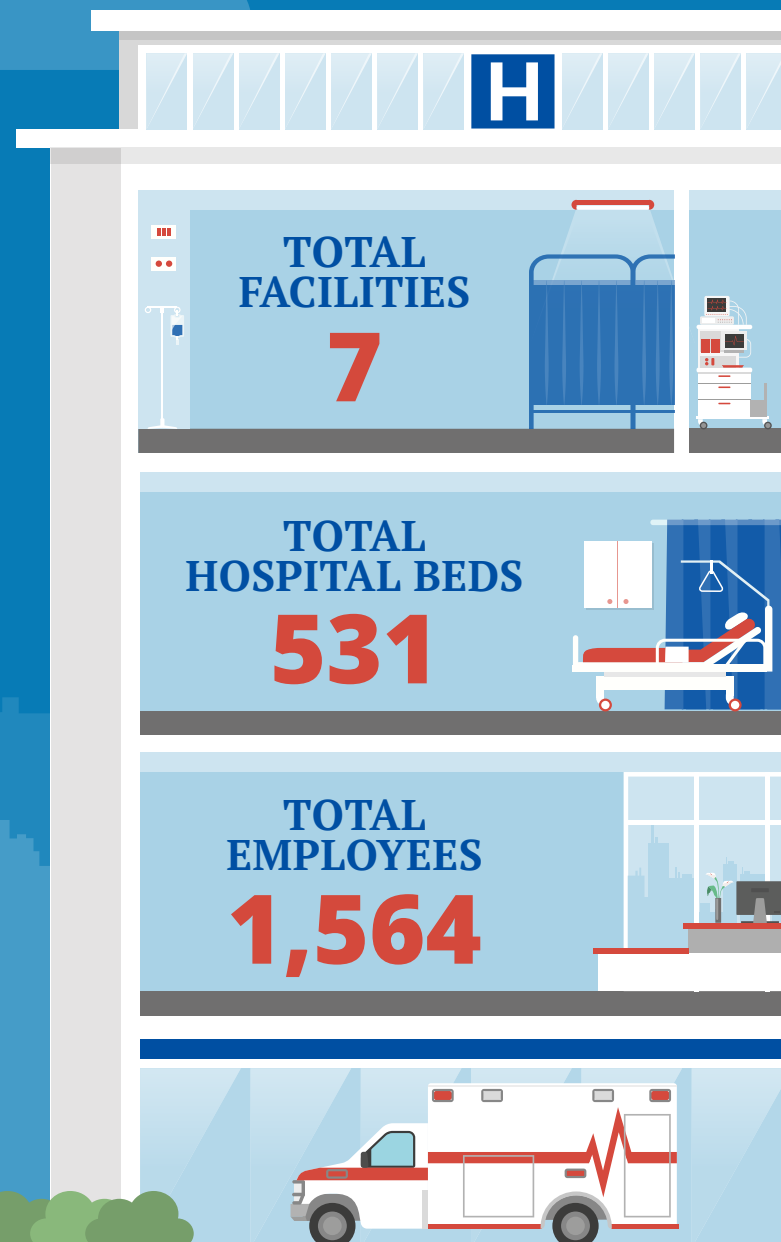
Rep. Rick Larsen (D)/ Washington 2nd

Rep. Pramila Jayapal (D)/ Washington 7th

Rep. Denny Heck (D)/ Washington 10th



Federation of American Hospitals represents America's investor-owned community hospitals and health systems.





# WASHINGTON FAH MEMBER FACILITIES

			Beds	Employees
<b>REP. SUZAN DELBENE (D)/ WASHINGTON 1ST</b>				
<b>2 HOSPITALS</b>				
Fairfax Hospital	Kirkland	Universal Health Services	157	497
Fairfax - Monroe	Monroe	Universal Health Services	34	
<b>REP. RICK LARSEN (D)/ WASHINGTON 2ND</b>				
<b>1 HOSPITAL</b>				
Fairfax - Everett	Everett	Universal Health Services	30	
<b>REP. PRAMILA JAYAPAL (D)/ WASHINGTON 7TH</b>				
<b>3 HOSPITALS</b>				
Kindred Hospital Seattle - First Hill	Seattle	Kindred	80	196
Kindred Hospital Seattle - Northgate	Seattle	Kindred	60	165
Schick Shadel Hospital	Seattle	Universal Health Services	60	101
<b>REP. DENNY HECK (D)/ WASHINGTON 10TH</b>				
<b>1 HOSPITAL</b>				
Capital Medical Center	Olympia	RCCH HealthCare Partners	110	605

^  
BACK  
TO TOP