



VIRGINIA

FAH MEMBER FACILITIES

SENATE

Sen. Tim Kaine (D)

Sen. Mark R. Warner (D)

HOUSE *(Click name to view the district)*

Rep. Rob Wittman (R)/ Virginia 1st

Rep. Scott Taylor (R)/ Virginia 2nd

Rep. Bobby Scott (D)/ Virginia 3rd

Rep. A. Donald McEachin (D)/ Virginia 4th

Rep. Thomas Garrett (R)/ Virginia 5th

Rep. Bob Goodlatte (R)/ Virginia 6th

Rep. Dave Brat (R)/ Virginia 7th

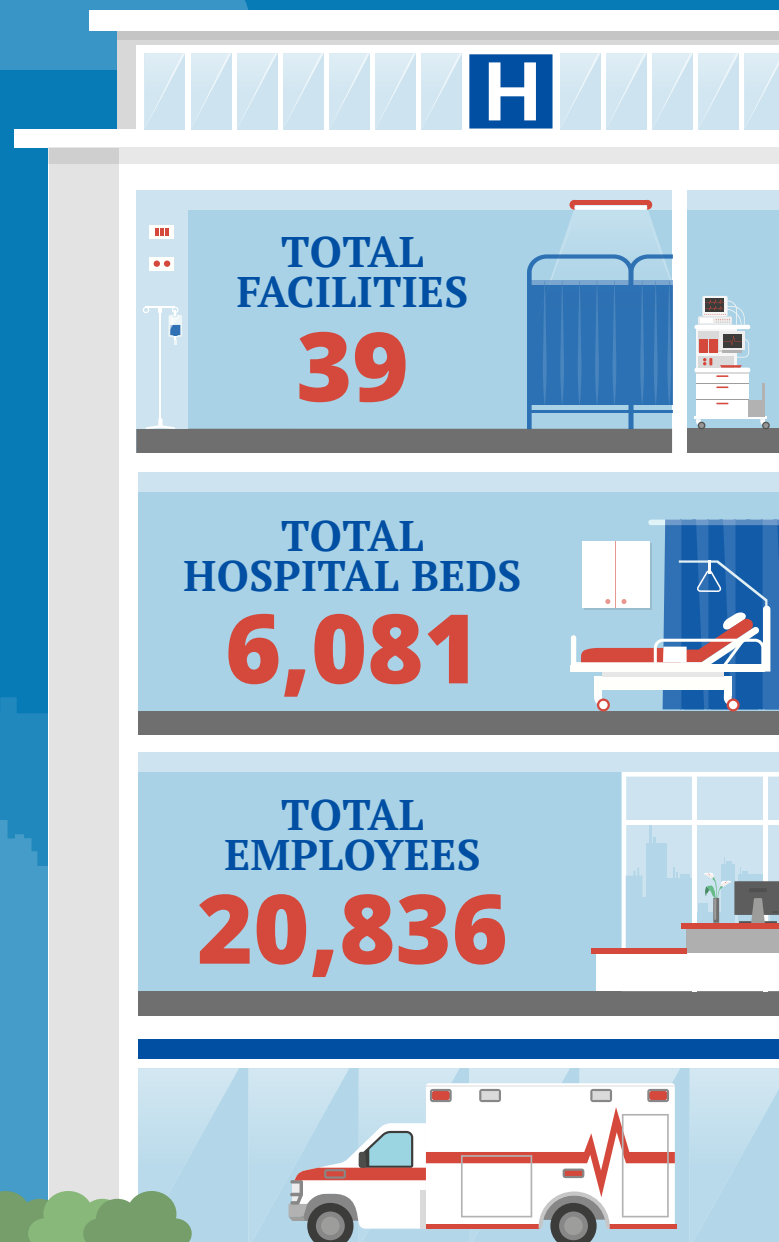
Rep. Morgan Griffith (R)/ Virginia 9th

Rep. Barbara Comstock (R)/ Virginia 10th

Rep. Gerry Connolly (D)/ Virginia 11th



Federation of American Hospitals represents America's investor-owned community hospitals and health systems.





VIRGINIA FAH MEMBER FACILITIES

			Beds	Employees
REP. ROB WITTMAN (R)/ VIRGINIA 1ST				
3 HOSPITALS				
Cumberland Hospital	New Kent	Universal Health Services	97	280
Encompass Health Rehabilitation Hospital of Fredericksburg	Fredericksburg	Encompass Health	52	209
Spotsylvania Regional Medical Center	Fredericksburg	HCA	137	589
REP. SCOTT TAYLOR (R)/ VIRGINIA 2ND				
1 HOSPITAL				
Virginia Beach Psychiatric Center	Virginia Beach	Universal Health Services	100	214
REP. BOBBY SCOTT (D)/ VIRGINIA 3RD				
5 HOSPITALS				
First Home Care (Oyster Point Academy Private Day School)	Portsmouth	Universal Health Services		285
Harbor Point Behavioral Health Center	Portsmouth	Universal Health Services	186	268
Kempsville Center for Behavioral Health	Norfolk	Universal Health Services	82	179
Newport News Behavioral Health Center	Newport News	Universal Health Services	132	214
Southampton Memorial Hospital	Franklin	Community Health Systems	221	404
REP. A. DONALD MCEACHIN (D)/ VIRGINIA 4TH				
7 HOSPITALS				
CJW Medical Center - Chippenham Campus	Richmond	HCA	789	3,430
Encompass Health Rehabilitation Hospital of Petersburg	Petersburg	Encompass Health	64	166
John Randolph Medical Center	Hopewell	HCA	147	515
Poplar Springs Hospital	Petersburg	Universal Health Services	208	385
Retreat Doctors' Hospital	Richmond	HCA	226	273
Southside Regional Medical Center	Petersburg	Community Health Systems	300	1,366
Southern Virginia Regional Medical Center	Emporia	Community Health Systems	80	225

^
BACK
TO TOP



VIRGINIA FAH MEMBER FACILITIES

			Beds	Employees
REP. THOMAS GARRETT (R)/ VIRGINIA 5TH				
4 HOSPITALS				
Danville Regional Medical Center	Danville	LifePoint Health	250	1,318
Hughes Center For Exceptional Children	Danville	Universal Health Services	56	127
Fauquier Hospital	Warrenton	LifePoint Health	210	1,151
UVA Rehabilitation Hospital	Charlottesville	Encompass Health	50	283
REP. BOB GOODLATTE (R)/ VIRGINIA 6TH				
1 HOSPITAL				
Liberty Point	Staunton	Universal Health Services	50	108
REP. DAVE BRAT (R)/ VIRGINIA 7TH				
4 HOSPITALS				
Parham Doctors' Hospital	Richmond	HCA		
Encompass Health Rehabilitation Hospital of Richmond	Richmond	Encompass Health	40	157
Henrico Doctors' Hospital	Richmond	HCA	340	1,562
CJW Medical Center - Johnston Willis Campus	Richmond	HCA		
REP. MORGAN GRIFFITH (R)/ VIRGINIA 9TH				
9 HOSPITALS				
Clinch Valley Medical Center	Richlands	LifePoint Health	175	683
Lewisgale Hospital Alleghany	Low Moor	HCA	205	231
Lewisgale Hospital Montgomery	Blacksburg	HCA	146	440
Lewisgale Hospital Pulaski	Pulaski	HCA	147	267
Lewisgale Medical Center	Salem	HCA	506	1,413
Memorial Hospital of Martinsville	Martinsville	LifePoint Health	220	865
The Rehabilitation Hospital of Southwest Virginia	Bristol	Encompass Health	25	116
Twin County Regional Healthcare	Galax	LifePoint Health	141	536
Wythe County Community Hospital	Wytheville	LifePoint Health	100	404

^
BACK
TO TOP



			Beds	Employees
REP. BARBARA COMSTOCK (R)/ VIRGINIA 10TH				
3 HOSPITALS				
Encompass Health Rehabilitation Hospital of Northern Virginia	Aldie	Encompass Health	60	219
North Spring Behavioral	Leesburg	Universal Health Services	100	203
Stonesprings Hospital Center	Dulles	HCA	124	278
REP. GERRY CONNOLLY (D)/ VIRGINIA 11TH				
2 HOSPITALS				
Dominion Hospital	Falls Church	HCA	116	262
Reston Hospital Center	Reston	HCA	199	1,211

^
BACK
TO TOP