



UTAH

FAH MEMBER FACILITIES

SENATE

Sen. Orrin Hatch (R)

Sen. Mike Lee (R)

HOUSE *(Click name to view the district)*

Rep. Rob Bishop (R)/ Utah 1st

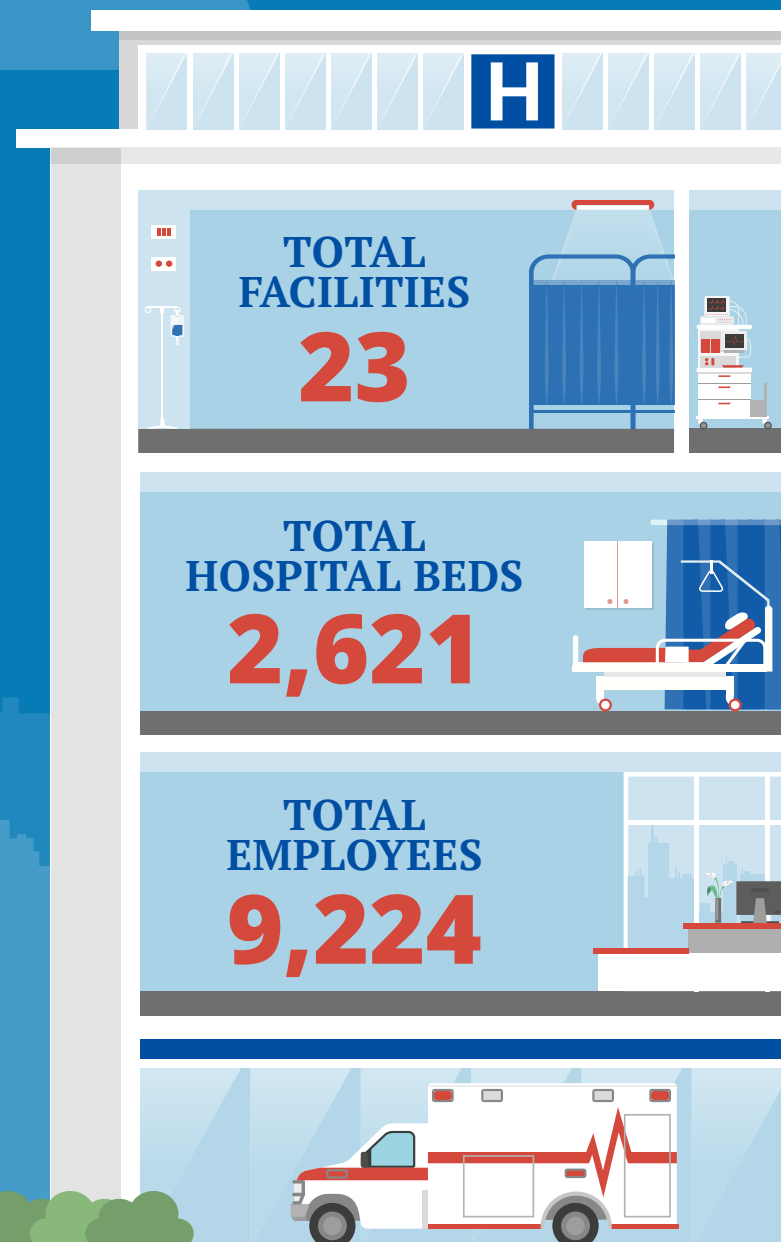
Rep. Chris Stewart (R)/ Utah 2nd

Rep. John Curtis (R)/ Utah 3rd

Rep. Mia Love (R)/ Utah 4th



Federation of American Hospitals represents America's investor-owned community hospitals and health systems.



UTAH FAH MEMBER FACILITIES

			Beds	Employees
REP. ROB BISHOP (R)/ UTAH 1ST				
4 HOSPITALS				
Brigham City Community Hospital	Brigham City	HCA	40	209
Cache Valley Hospital	North Logan	HCA	22	286
Davis Hospital & Medical Center	Layton	Steward	220	881
Ogden Regional Medical Center	Ogden	HCA	176	925
REP. CHRIS STEWART (R)/ UTAH 2ND				
3 HOSPITALS				
Benchmark Behavioral Health System	Woods Cross	Universal Health Services	94	179
Lakeview Hospital	Bountiful	HCA	128	525
Salt Lake Regional Medical Center	Salt Lake City	Steward	158	494
REP. JOHN CURTIS (R)/ UTAH 3RD				
10 HOSPITALS				
Ashley Regional Medical Center	Vernal	LifePoint Health	39	259
Castleview Hospital	Price	LifePoint Health	49	382
Center for Change	Orem	Universal Health Services	58	226
HealthSouth Rehabilitation Hospital of Utah	Sandy	Encompass Health	84	190
Lone Peak Hospital	Draper	HCA	32	233
Mountain View Hospital	Payson	HCA	124	390
Provo Canyon Behavioral Hospital	Orem	Universal Health Services	80	198
Provo Canyon School Boys Campus	Springville	Universal Health Services	130	
Provo Canyon School Girls Campus	Springville	Universal Health Services	128	
Timpanogos Regional Hospital	Orem	HCA	122	596
REP. MIA LOVE (R)/ UTAH 4TH				
6 HOSPITALS				
Copper Hills Youth Center	West Jordan	Universal Health Services	197	31
Jordan Valley Medical Center	West Jordan	Steward	172	763
Jordan Valley Medical Center - West Valley Campus	West Valley City	Steward	102	422
Mountain Point Medical Center (Campus of Jordan Valley Medical Center)	Lehi	Steward	40	248
Salt Lake Behavioral Health	Salt Lake City	Universal Health Services	118	224
St. Mark's Hospital	Salt Lake City	HCA	308	1,563

BACK TO TOP