



TEXAS

FAH MEMBER FACILITIES

SENATE

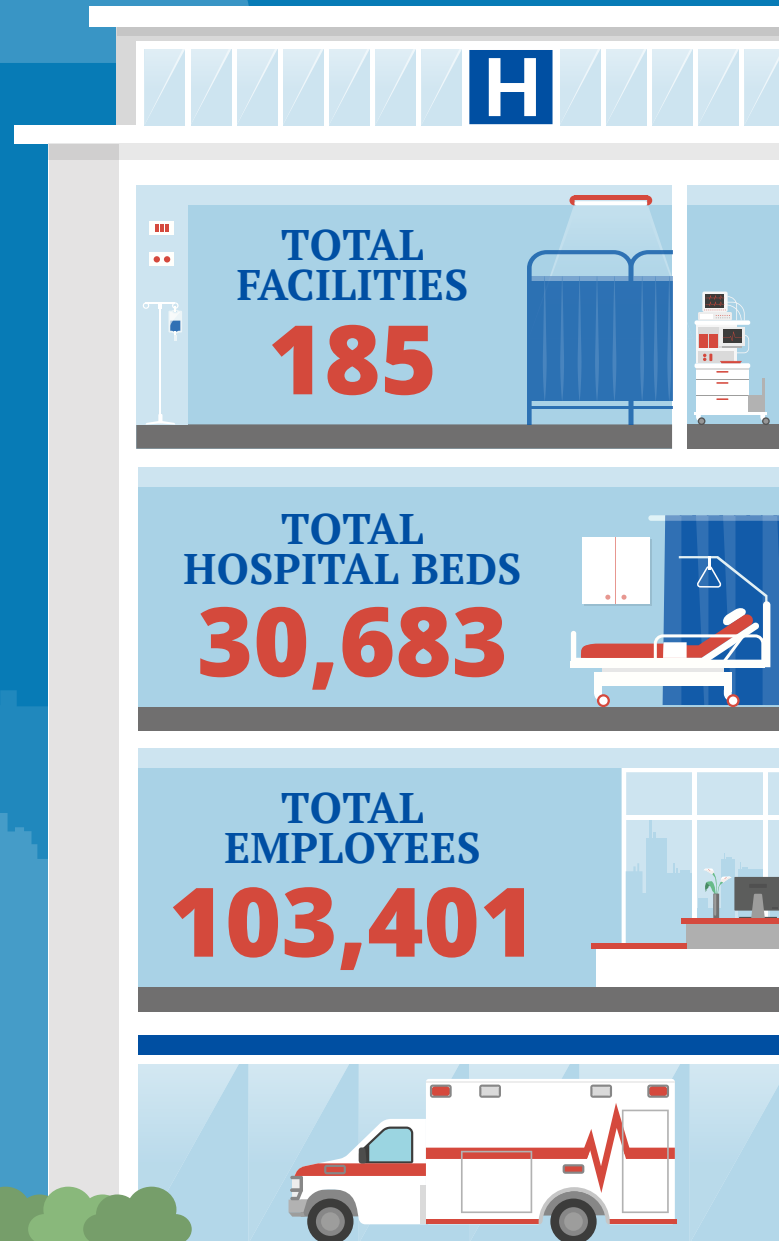
Sen. John Cornyn (R)
Sen. Ted Cruz (R)

HOUSE *(Click name to view the district)*

- Rep. Louie Gohmert (R)/ Texas 1st
- Rep. Ted Poe (R)/ Texas 2nd
- Rep. Sam Johnson (R)/ Texas 3rd
- Rep. John Ratcliffe (R)/ Texas 4th
- Rep. Jeb Hensarling (R)/ Texas 5th
- Rep. Joe Barton (R)/ Texas 6th
- Rep. John Culberson (R)/ Texas 7th
- Rep. Kevin Brady (R)/ Texas 8th
- Rep. Al Green (D)/ Texas 9th
- Rep. Michael McCaul (R)/ Texas 10th
- Rep. K. Michael Conaway (R)/ Texas 11th
- Rep. Kay Granger (R)/ Texas 12th
- Rep. Mac Thornberry (R)/ Texas 13th
- Rep. Randy Weber (R)/ Texas 14th
- Rep. Vicente Gonzalez (D)/ Texas 15th
- Rep. Beto O'Rourke (D)/ Texas 16th
- Rep. Bill Flores (R)/ Texas 17th
- Rep. Sheila Jackson Lee (D)/ Texas 18th
- Rep. Jodey Arrington (R)/ Texas 19th
- Rep. Joaquin Castro (D)/ Texas 20th
- Rep. Lamar Smith (R)/ Texas 21st
- Rep. Pete Olson (R)/ Texas 22nd
- Rep. Will Hurd (R)/ Texas 23rd
- Rep. Kenny Marchant (R)/ Texas 24th
- Rep. Roger Williams (R)/ Texas 25th
- Rep. Michael Burgess (R)/ Texas 26th
- Rep. Michael Cloud (R)/ Texas 27th
- Rep. Henry Cuellar (D)/ Texas 28th
- Rep. Eddie Bernice Johnson (D)/ Texas 30th
- Rep. John Carter (R)/ Texas 31st
- Rep. Pete Sessions (R)/ Texas 32nd
- Rep. Marc Veasey (D)/ Texas 33rd
- Rep. Filemon Vela (D)/ Texas 34th
- Rep. Lloyd Doggett (D)/ Texas 35th
- Rep. Brian Babin (R)/ Texas 36th



Federation of American Hospitals represents America's investor-owned community hospitals and health systems.





TEXAS FAH MEMBER FACILITIES

			Beds	Employees
REP. LOUIE GOHMERT (R)/ TEXAS 1ST				
10 HOSPITALS				
Christus Trinity Mother Frances Rehabilitation Hospital, a partner of Encompass Health	Tyler	Encompass Health	74	230
Longview Regional Medical Center	Longview	Community Health Systems	230	986
Nacogdoches Medical Center	Nacogdoches	Tenet Healthcare	153	429
UT Health Carthage	Carthage	Ardent	42	117
UT Health Henderson	Henderson	Ardent	153	429
UT Health North Campus Tyler	Tyler	Ardent	130	1,487
UT Health Rehabilitation Hospital	Tyler	Ardent	49	313
UT Health Specialty Hospital	Tyler	Ardent	36	94
UT Health Tyler	Tyler	Ardent	502	2,384
Woodland Heights Medical Center	Lufkin	Community Health Systems	149	563
REP. TED POE (R)/ TEXAS 2ND				
3 HOSPITALS				
Encompass Health Rehabilitation Hospital The Vintage	Houston	Encompass Health	60	141
Kindred Hospital Town & Country	Houston	Kindred	66	129
Kingwood Pines Hospital	Kingwood	Universal Health Services	116	228
REP. SAM JOHNSON (R)/ TEXAS 3RD				
6 HOSPITALS				
Baylor Scott & White Medical Center at Centennial Medical Center	Frisco	Tenet Healthcare	118	504
Encompass Health Rehabilitation Hospital of Plano	Plano	Encompass Health	83	274
Encompass Health Rehabilitation Hospital of Richardson	Richardson	Encompass Health	50	186
Medical City Frisco	Frisco	HCA	54	132
Medical City McKinney	McKinney	HCA	260	915
Medical City Plano	Plano	HCA	493	1,911

^
BACK
TO TOP



TEXAS FAH MEMBER FACILITIES

			Beds	Employees
REP. JOHN RATCLIFFE (R)/ TEXAS 4TH				
8 HOSPITALS				
Baylor Scott & White Medical Center at Lake Pointe Medical Center	Rowlett	Tenet Healthcare	112	836
Glen Oaks Hospital	Greenville	Universal Health Services	54	160
Encompass Health Rehabilitation Hospital of Texarkana	Texarkana	Encompass Health	60	218
Paris Regional Medical Center	Paris	RCCH HealthCare Partners	368	1,035
Texoma Behavioral Health Center	Sherman	Universal Health Services	60	
Texoma Medical Center	Denison	Universal Health Services	266	1,706
Texoma Care	Denison	Universal Health Services		
UT Health Pittsburg	Pittsburg	Ardent	25	188
Wadley Regional Medical Center	Texarkana	Steward	370	763
REP. JEB HENSARLING (R)/ TEXAS 5TH				
4 HOSPITALS				
Baylor Scott & White Medical Center at Sunnyvale	Sunnyvale	Tenet Healthcare	70	447
Baylor Scott & White Medical Center at White Rock Lake	Dallas	Tenet Healthcare	218	779
Kindred Hospital White Rock	Dallas	Kindred	25	79
Palestine Regional Medical Center	Palestine	LifePoint Health	156	535
UT Health Athens	Athens	Ardent	27	467
UT Health Jacksonville	Jacksonville	Ardent	72	220
UT Health Quitman	Quitman	Ardent	25	181
REP. JOE BARTON (R)/ TEXAS 6TH				
7 HOSPITALS				
Ennis Regional Medical Center	Ennis	LifePoint Health	60	155
Encompass Health Rehabilitation Hospital of Arlington	Arlington	Encompass Health	85	270
Kindred Hospital Mansfield	Mansfield	Kindred	55	121
Kindred Hospital Tarrant County - Arlington	Arlington	Kindred	68	172
Medical City Arlington	Arlington	HCA	342	1,241
Navarro Regional Hospital	Corsicana	Community Health Systems	162	252
Texas Rehabilitation Hospital of Arlington	Arlington	Kindred	40	170

BACK TO TOP



TEXAS FAH MEMBER FACILITIES

			Beds	Employees
REP. JOHN CULBERSON (R)/ TEXAS 7TH				
5 HOSPITALS				
Behavioral Hospital of Bellaire	Houston	Universal Health Services	124	236
Cypress Fairbanks Medical Center	Houston	HCA	181	971
Encompass Health Rehabilitation Hospital of Cypress	Houston	Encompass Health	60	239
Kindred Hospital Houston Northwest	Houston	Kindred	84	170
West Oaks Hospital	Houston	Universal Health Services	160	363
REP. KEVIN BRADY (R)/ TEXAS 8TH				
4 HOSPITALS				
Conroe Regional Medical Center	Conroe	HCA	328	1,245
Encompass Health Rehabilitation Hospital of The Woodlands	Conroe	Encompass Health	84	196
Encompass Health Rehabilitation Hospital Vision Park	Shenandoah	Encompass Health	60	157
Kingwood Medical Center	Kingwood	HCA	373	1,439
REP. AL GREEN (D)/ TEXAS 9TH				
5 HOSPITALS				
Kindred Hospital Houston Medical Center	Houston	Kindred	110	359
Park Plaza Hospital	Houston	HCA	444	613
Texas Orthopedic Hospital	Houston	HCA	49	446
West Houston Medical Center	Houston	HCA	302	1,343
Woman's Hospital of Texas	Houston	HCA	397	1,548
REP. MICHAEL MCCAUL (R)/ TEXAS 10TH				
2 HOSPITALS				
Heart Hospital of Austin	Austin	HCA	58	362
Kindred Hospital Tomball	Tomball	Kindred	75	169

^
BACK
TO TOP



TEXAS FAH MEMBER FACILITIES

			Beds	Employees
REP. K. MICHAEL CONAWAY (R)/ TEXAS 11TH				
7 HOSPITALS				
Brownwood Regional Medical Center	Brownwood	Community Health Systems	188	405
Encompass Health Rehabilitation Hospital of Midland Odessa	Midland	Encompass Health	60	225
Lake Granbury Medical Center	Granbury	Community Health Systems	73	377
Odessa Regional Medical Center	Odessa	Steward	211	745
Odessa Regional Medical Center South Campus	Odessa	Steward	14	
River Crest Hospital	San Angelo	Universal Health Services	80	168
San Angelo Community Medical Center	San Angelo	Community Health Systems	171	592
REP. KAY GRANGER (R)/ TEXAS 12TH				
8 HOSPITALS				
Encompass Health Rehabilitation Hospital of City View	Fort Worth	Encompass Health	62	202
Encompass Health Rehabilitation Hospital of Fort Worth	Fort Worth	Encompass Health	60	188
Kindred Hospital Fort Worth	Fort Worth	Kindred	67	161
Kindred Hospital Tarrant County - Fort Worth Southwest	Fort Worth	Kindred	92	281
Medical City Alliance	Fort Worth	HCA	55	304
Medical City Fort Worth	Fort Worth	HCA	320	1,185
Medical City North Hills	North Richland Hills	HCA	164	603
Texas Rehabilitation Hospital of Fort Worth	Fort Worth	Kindred	66	292
REP. MAC THORBERRY (R)/ TEXAS 13TH				
6 HOSPITALS				
BSA Hospital	Amarillo	Ardent	445	1,995
Encompass Health Rehabilitation Hospital of Wichita Falls	Wichita Falls	Encompass Health	63	227
Northwest Texas Healthcare System	Amarillo	Universal Health Services	405	1,949
Physician Surgical Hospital	Amarillo	Ardent	41	179
The Pavilion At Northwest Texas	Amarillo	Universal Health Services	103	228
The Recovery Center	Wichita Falls	Universal Health Services	34	92

BACK TO TOP



TEXAS FAH MEMBER FACILITIES

			Beds	Employees
REP. RANDY WEBER (R)/ TEXAS 14TH				
3 HOSPITALS				
Mainland Medical Center	Texas City	HCA	222	788
The Medical Center of Southeast Texas	Port Arthur	Steward	199	789
The Medical Center of Southeast Texas - Victory Campus	Beaumont	Steward	17	
REP. VICENTE GONZALEZ (D)/ TEXAS 15TH				
7 HOSPITALS				
Cornerstone Regional Medical Center	Edinburg	Universal Health Services	14	
Edinburg Children's Hospital	Edinburg	Universal Health Services	107	
Edinburg Regional Medical Center	Edinburg	Universal Health Services	213	
McAllen Heart Hospital	McAllen	Universal Health Services	60	
McAllen Medical Center	McAllen	Universal Health Services	441	2,316
Rio Grande Regional Hospital	McAllen	HCA	320	1,123
South Texas Behavioral Health Center	Edinburg	Universal Health Services	134	
REP. BETO O'ROURKE (D)/ TEXAS 16TH				
8 HOSPITALS				
Del Sol Medical Center	El Paso	HCA	347	1,435
El Paso Behavioral Health	El Paso	Universal Health Services	163	
Kindred Hospital El Paso	El Paso	Kindred	72	197
Las Palmas Medical Center	El Paso	HCA	327	1,128
Las Palmas Rehabilitation Hospital	El Paso	HCA		
The Hospitals of Providence East Campus	El Paso	Tenet Healthcare	182	881
The Hospitals of Providence Memorial Campus	El Paso	Tenet Healthcare	480	1,507
The Hospitals of Providence Sierra Campus	El Paso	Tenet Healthcare	329	999

^
BACK
TO TOP



TEXAS FAH MEMBER FACILITIES

			Beds	Employees
REP. BILL FLORES (R)/ TEXAS 17TH				
4 HOSPITALS				
CHI St. Joseph Health Rehabilitation Hospital, an affiliate of Encompass Health	Bryan	Encompass Health	49	135
College Station Medical Center	College Station	Community Health Systems	167	471
Parkview Regional Hospital	Mexia	LifePoint Health	58	182
St. David's North Austin Medical Center	Austin	HCA	378	1,819

REP. SHEILA JACKSON LEE (D)/ TEXAS 18TH				
8 HOSPITALS				
Cypress Creek Hospital	Houston	Universal Health Services	96	260
Encompass Health Rehabilitation Hospital of Humble	Humble	Encompass Health	90	192
Houston Northwest Medical Center	Houston	HCA	423	1,540
Kindred Hospital Spring	Houston	Kindred	115	176
Kindred Hospital The Heights	Houston	Kindred	68	154
Kindred Rehabilitation Hospital Northeast Houston	Humble	Kindred	46	129
St. Joseph Medical Center	Houston	Steward	748	1,502
St. Joseph Medical Center in the Heights	Houston	Steward	42	83

REP. JODEY ARRINGTON (R)/ TEXAS 19TH				
2 HOSPITALS				
Abilene Regional Medical Center	Abilene	Community Health Systems	231	721
Encompass Health Rehabilitation Hospital of Abilene	Abilene	Encompass Health	30	136

REP. JOAQUIN CASTRO (D)/ TEXAS 20TH				
3 HOSPITALS				
Encompass Health Rehabilitation Hospital of San Antonio	San Antonio	Encompass Health	108	239
Kindred Hospital San Antonio	San Antonio	Kindred	59	136
Methodist Teksan Hospital	San Antonio	HCA	120	446

REP. LAMAR SMITH (R)/ TEXAS 21ST				
---	--	--	--	--

^
BACK TO TOP



TEXAS FAH MEMBER FACILITIES

			Beds	Employees
14 HOSPITALS				
Encompass Health Rehabilitation Hospital of Austin	Austin	Encompass Health	60	196
Laurel Ridge Treatment Center	San Antonio	Universal Health Services	250	600
Methodist Ambulatory Surgery Hospital NW	San Antonio	HCA	28	111
Methodist Hospital	San Antonio	HCA	949	3,910
Methodist Children's Hospital of South Texas	San Antonio	HCA		
Methodist Specialty and Transplant Hospital	San Antonio	HCA	383	1,060
Methodist Stone Oak Hospital	San Antonio	HCA	140	886
North Central Baptist Hospital	San Antonio	Tenet Healthcare	387	1,253
Northeast Baptist Hospital	San Antonio	Tenet Healthcare	371	979
San Marcos Treatment Center	San Marcos	Universal Health Services	265	295
St. David's South Austin Medical Center	Austin	HCA	314	1,486
St. Luke's Baptist Hospital	San Antonio	Tenet Healthcare	282	1,004
Texas Neurorehab Center	Austin	Universal Health Services	151	382
Texas Star Recovery	Austin	Universal Health Services	28	

REP. PETE OLSON (R)/ TEXAS 22ND

5 HOSPITALS

Clear Lake Regional Medical Center	Webster	HCA	531	2,077
Encompass Health Rehabilitation Hospital of Sugar Land	Sugar Land	Encompass Health	50	240
Kindred Hospital Clear Lake	Webster	Kindred	110	260
Kindred Hospital Sugar Land	Sugar Land	Kindred	105	242
Pearland Medical Center	Pearland	HCA	34	286

REP. WILL HURD (R)/ TEXAS 23RD

3 HOSPITALS

Fort Duncan Medical Center	Eagle Pass	Universal Health Services	101	399
Southwest General Hospital	San Antonio	Steward	327	747
Encompass Health Rehabilitation Hospital of Pearland	Pearland	Encompass Health		

REP. KENNY MARCHANT (R)/ TEXAS 24TH

2 HOSPITALS

--	--	--	--	--

BACK TO TOP



TEXAS FAH MEMBER FACILITIES

			Beds	Employees
Encompass Health Rehabilitation Hospital of the Mid-Cities	Bedford	Encompass Health	60	213
Las Colinas Medical Center	Irving	HCA	100	439
REP. ROGER WILLIAMS (R)/ TEXAS 25TH				
5 HOSPITALS				
Austin Lakes Hospital	Austin	Universal Health Services	58	144
Central Texas Rehabilitation Hospital	Austin	Kindred	50	197
Hill Regional Hospital	Hillsboro	Community Health Systems	116	158
St. David's Medical Center	Austin	HCA	426	2,119
St. David's Rehabilitation Hospital	Austin	HCA		
REP. MICHAEL BURGESS (R)/ TEXAS 26TH				
4 HOSPITALS				
Denton Regional Medical Center	Denton	HCA	208	867
Mayhill Hospital	Denton	Universal Health Services	59	151
Medical City Lewisville	Lewisville	HCA	186	780
University Behavioral Health of Denton	Denton	Universal Health Services	104	253
REP. MICHAEL CLOUD (R) / TEXAS 27TH				
7 HOSPITALS				
Corpus Christi Medical Center	Corpus Christi	HCA	631	1,429
Corpus Christi Medical Center - Bay Area	Corpus Christi	HCA		
Corpus Christi Medical Center - Doctors Regional	Corpus Christi	HCA		
Corpus Christi Medical Center - Heart Hospital	Corpus Christi	HCA		
Corpus Christi Medical Center - Northwest Regional Hospital	Corpus Christi	HCA		
DeTar Hospital Navarro	Victoria	Community Health Systems	308	1,022
DeTar Hospital North (Campus of DeTar Hospital Navarro)	Victoria	Community Health Systems		
REP. HENRY CUELLAR (D)/ TEXAS 28TH				
3 HOSPITALS				

^
BACK
TO TOP



TEXAS FAH MEMBER FACILITIES

			Beds	Employees
Doctors Hospital of Laredo	Laredo	Universal Health Services	183	844
Laredo Medical Center	Laredo	Community Health Systems	326	1,170
Northeast Methodist Hospital	San Antonio	HCA	179	820

REP. EDDIE BERNICE JOHNSON (D)/ TEXAS 30TH

3 HOSPITALS

Hickory Trail Hospital	De Soto	Universal Health Services	86	182
Methodist Rehabilitation Hospital	Dallas	Kindred	40	182
Timberlawn Mental Health System	Dallas	Universal Health Services	144	80

REP. JOHN CARTER (R)/ TEXAS 31ST

6 HOSPITALS

Cedar Park Regional Medical Center	Cedar Park	Community Health Systems	93	588
Encompass Health Rehabilitation Hospital of Round Rock	Round Rock	Encompass Health	75	215
Meridell Achievement Center	Liberty Hill	Universal Health Services	134	203
St. David's Georgetown Hospital	Georgetown	HCA	111	493
St. David's Round Rock Medical Center	Round Rock	HCA	171	920
St. David's Surgical Hospital	Austin	HCA	46	99

REP. PETE SESSIONS (R)/ TEXAS 32ND

6 HOSPITALS

Garland Behavioral Hospital	Garland	Universal Health Services	72	77
Green Oaks Hospital/Medical City Green Oaks Hospital	Dallas	HCA	124	415
Encompass Health Rehabilitation Hospital of Dallas	Dallas	Encompass Health	60	143
Kindred Hospital Dallas	Dallas	Kindred	110	182
Kindred Hospital Dallas Central	Dallas	Kindred	60	159
Medical City Dallas Hospital	Dallas	HCA	797	2,771

REP. MARC VEASEY (D)/ TEXAS 33RD

1 HOSPITAL

Millwood Hospital	Arlington	Universal Health Services	122	309
-------------------	-----------	---------------------------	-----	-----

BACK TO TOP



TEXAS FAH MEMBER FACILITIES

			Beds	Employees
REP. FILEMON VELA (D)/ TEXAS 34TH				
3 HOSPITALS				
Valley Baptist Medical Center - Brownsville	Brownsville	Tenet Healthcare	280	776
Valley Baptist Medical Center - Harlingen	Harlingen	Tenet Healthcare	586	1,199
Valley Regional Medical Center	Brownsville	HCA	214	820
REP. LLOYD DOGGETT (D)/ TEXAS 35TH				
6 HOSPITALS				
Austin Oaks Hospital	Austin	Universal Health Services	80	163
Baptist Medical Center	San Antonio	Tenet Healthcare	623	1,358
Kindred Hospital San Antonio - Central	San Antonio	Kindred	44	112
Metropolitan Methodist Hospital	San Antonio	HCA	330	1,302
Mission Trail Baptist Hospital	San Antonio	Tenet Healthcare	110	550
Resolute Health Hospital	New Braunfels	Tenet Healthcare	128	424
REP. BRIAN BABIN (R)/ TEXAS 36TH				
3 HOSPITALS				
Bayshore Medical Center	Pasadena	HCA	350	1,298
Kindred Hospital Bay Area	Pasadena	Kindred	74	220
Kindred Rehabilitation Hospital Clear Lake	Webster	Kindred	60	210

^
BACK
TO TOP