



SOUTH CAROLINA

FAH MEMBER FACILITIES

SENATE

Sen. Lindsey Graham (R)

Sen. Tim Scott (R)

HOUSE *(Click name to view the district)*

Rep. Mark Sanford (R)/ South Carolina 1st

Rep. Joe Wilson (R)/ South Carolina 2nd

Rep. Jeff Duncan (R)/ South Carolina 3rd

Rep. Trey Gowdy (R)/ South Carolina 4th

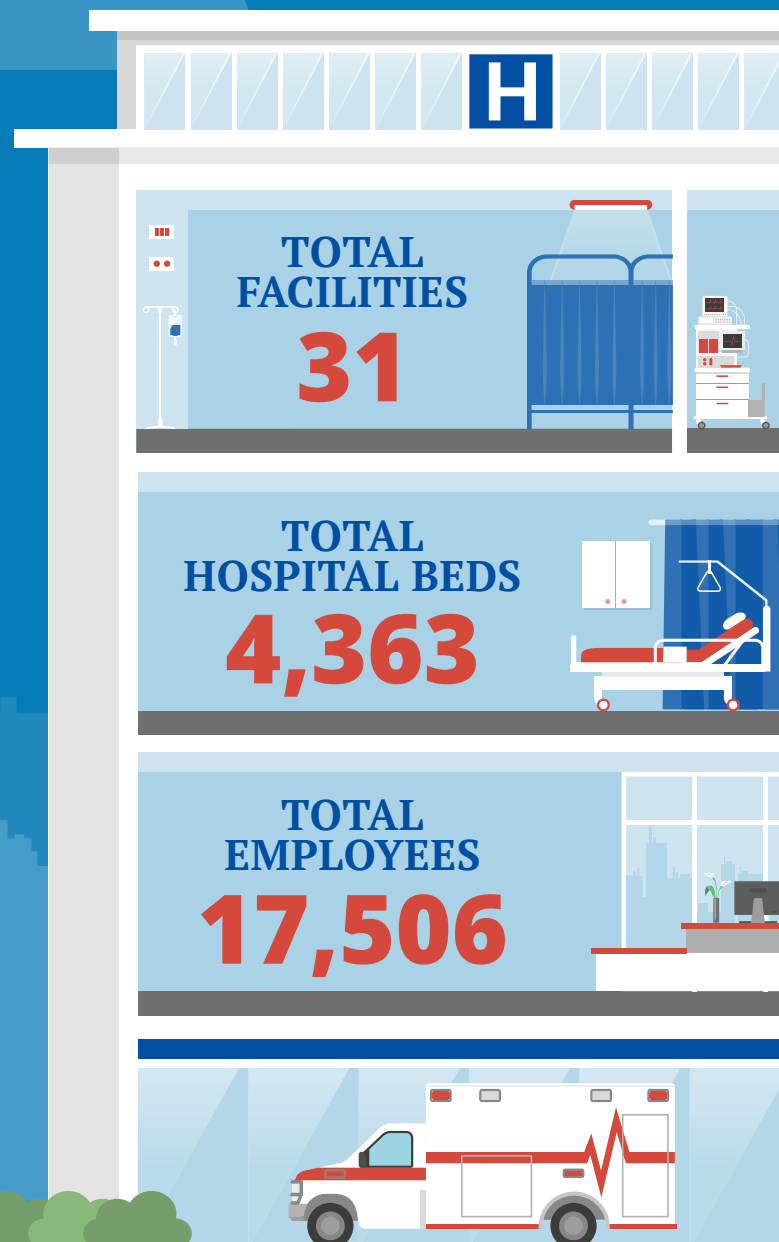
Rep. Ralph Norman (R)/ South Carolina 5th

Rep. James E. Clyburn (D)/ South Carolina 6th

Rep. Tom Rice (R)/ South Carolina 7th



Federation of American Hospitals represents America's investor-owned community hospitals and health systems.





SOUTH CAROLINA FAH MEMBER FACILITIES

			Beds	Employees
REP. MARK SANFORD (R)/ SOUTH CAROLINA 1ST				
6 HOSPITALS				
East Cooper Medical Center	Mt. Pleasant	Tenet Healthcare	140	533
Encompass Health Rehabilitation Hospital of Charleston	Charleston	Encompass Health	49	184
Hilton Head Hospital	Hilton Head Island	Tenet Healthcare	93	564
Palmetto Summerville	Summerville	Universal Health Services	60	100
Trident Medical Center	Charleston	HCA	407	2,208
Summerville Medical Center	Summerville	HCA		
REP. JOE WILSON (R)/ SOUTH CAROLINA 2ND				
4 HOSPITALS				
Aiken Regional Medical Center	Aiken	Universal Health Services	183	1,067
Aurora Pavilion at Aiken RMC	Aiken	Universal Health Services	62	
Three Rivers Behavioral Healthcare	West Columbia	Universal Health Services	118	276
Three Rivers Residential Treatment - Midlands	West Columbia	Universal Health Services	59	103
REP. JEFF DUNCAN (R)/ SOUTH CAROLINA 3RD				
1 HOSPITAL				
AnMed Health Rehabilitation Hospital, an affiliate of Encompass Health	Anderson	Encompass Health	60	221
REP. TREY GOWDY (R)/ SOUTH CAROLINA 4TH				
2 HOSPITALS				
Carolina Center	Greer	Universal Health Services	130	328
Mary Black Memorial Hospital	Spartanburg	Community Health Systems	207	860
REP. RALPH NORMAN (R)/ SOUTH CAROLINA 5TH				
6 HOSPITALS				
Chester Regional Medical Center	Chester	Community Health Systems	82	210
Encompass Health Rehabilitation Hospital of Rock Hill	Rock Hill	Encompass Health	50	157
KershawHealth Medical Center	Camden	RCCH HealthCare Partners	121	841
Mary Black Health System - Gaffney	Gaffney	Community Health Systems	125	319
Piedmont Medical Center	Rock Hill	Tenet Healthcare	288	1,610
Springs Memorial Hospital	Lancaster	Community Health Systems	213	686

BACK TO TOP



SOUTH CAROLINA FAH MEMBER FACILITIES

			Beds	Employees
REP. JAMES E. CLYBURN (D)/ SOUTH CAROLINA 6TH				
5 HOSPITALS				
Coastal Carolina Hospital	Hardeeville	Tenet Healthcare	41	332
Colleton Medical Center	Walterboro	HCA	135	488
Encompass Health Rehabilitation Hospital of Columbia	Columbia	Encompass Health	96	264
Palmetto Lowcountry Behavioral Health	North Charleston	Universal Health Services	108	199
Providence Hospital	Columbia	LifePoint Health	332	1,793
REP. TOM RICE (R)/ SOUTH CAROLINA 7TH				
7 HOSPITALS				
Carolinas Hospital System	Florence	Community Health Systems	420	1,314
Carolinas Hospital System - Marion	Mullins	Community Health Systems	124	319
Carolina Pines Regional Medical Center	Hartsville	RCCH HealthCare Partners	116	656
Grand Strand Regional Medical Center	Myrtle Beach	HCA	301	1,362
Encompass Health Rehabilitation Hospital of Florence	Florence	Encompass Health	88	205
Lighthouse Behavioral Health Hospital	Conway	Universal Health Services	96	190
Palmetto Pee Dee Behavioral Health	Florence	Universal Health Services	59	117


 BACK
 TO TOP