



# RHODE ISLAND

## FAH MEMBER FACILITIES

### SENATE

Sen. Sheldon Whitehouse (D)

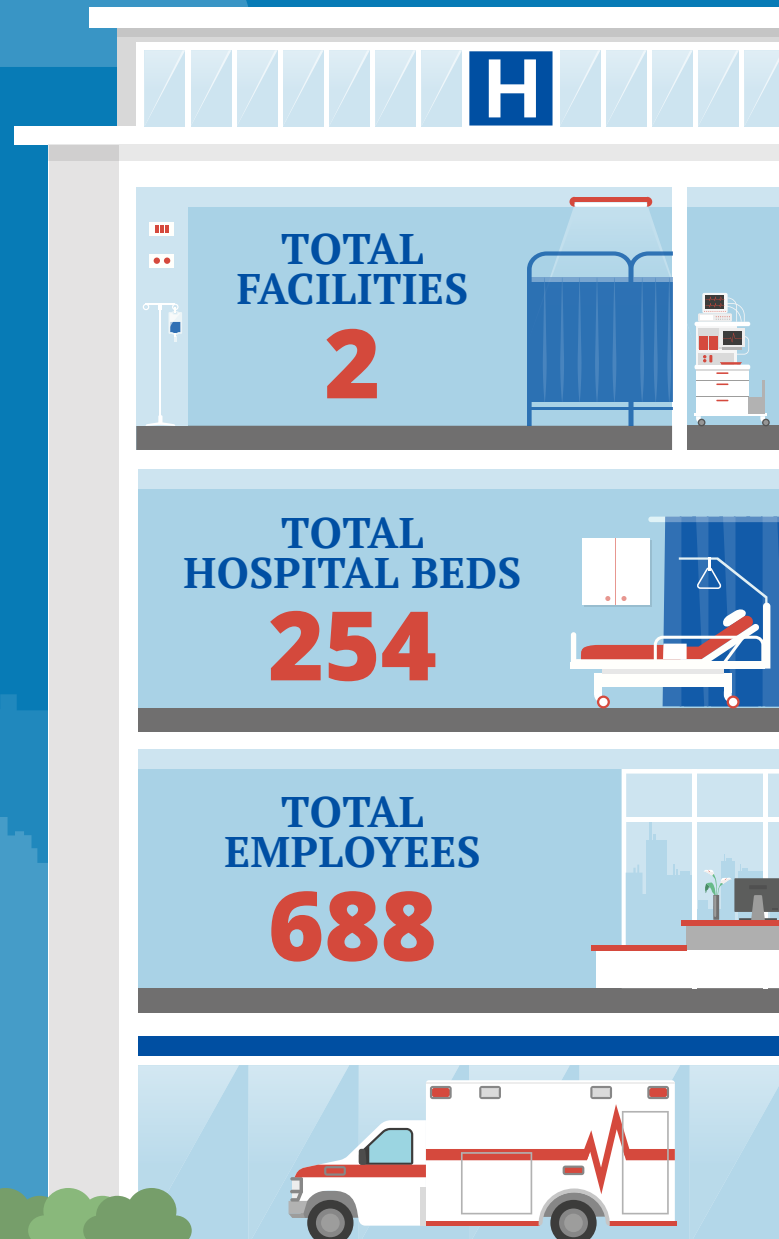
Sen. Jack Reed (D)

### HOUSE *(Click name to view the district)*

Rep. David Cicilline (R)/ Rhode Island 1st



Federation of American Hospitals represents America's investor-owned community hospitals and health systems.





			Beds	Employees
<b>REP. DAVID CICILLINE (D)/ RHODE ISLAND 1ST</b>				
<b>2 HOSPITALS</b>				
Landmark Medical Center	Woonsocket	Prime Healthcare Services	214	633
Rehabilitation Hospital of Rhode Island	Norht Smithfield	Prime Healthcare Services	40	55

^  
BACK  
TO TOP