



PENNSYLVANIA

FAH MEMBER FACILITIES

SENATE

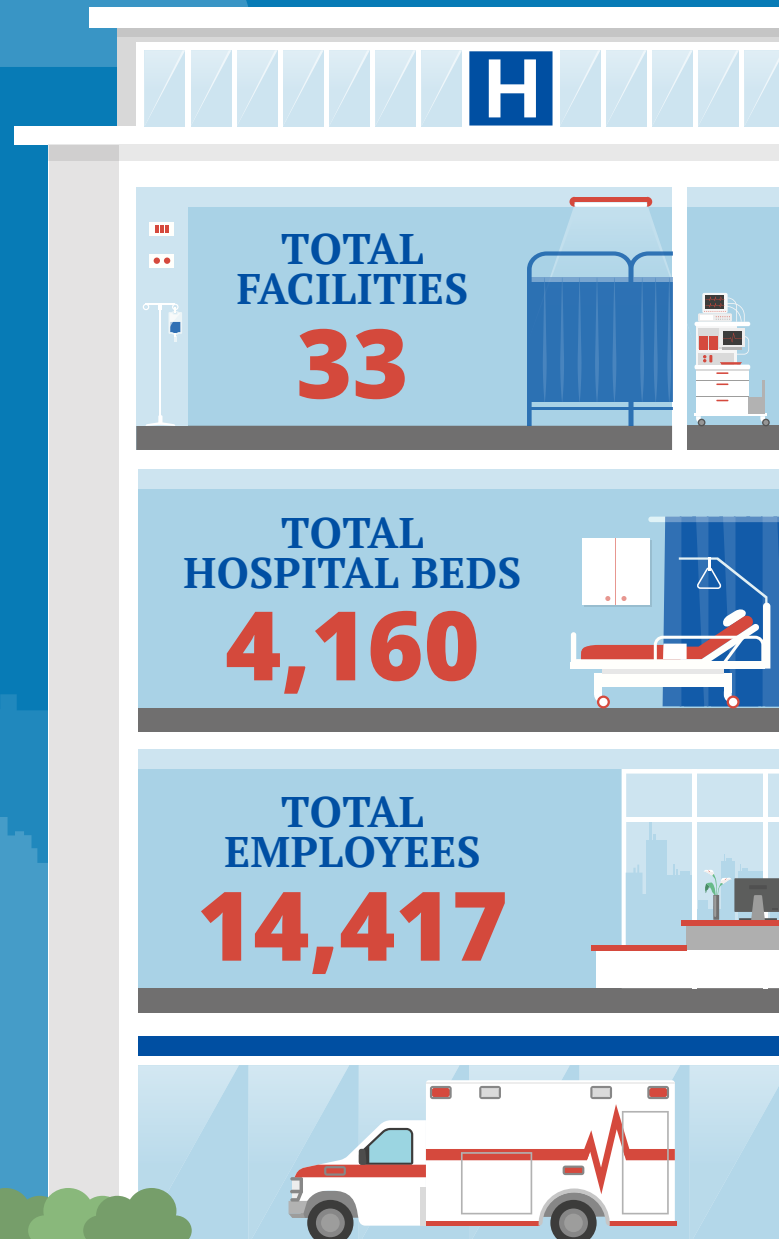
Sen. Bob Casey (D)
Sen. Patrick Toomey (R)

HOUSE *(Click name to view the district)*

Rep. Dwight Evans (D)/ Pennsylvania 2nd
Rep. Mike Kelly (R)/ Pennsylvania 3rd
Rep. Scott Perry (R)/ Pennsylvania 4th
Rep. Glenn Thompson (R)/ Pennsylvania 5th
Rep. Ryan Costello (R)/ Pennsylvania 6th
Vacant/ Pennsylvania 7th
Rep. Brian Fitzpatrick (R)/ Pennsylvania 8th
Rep. Bill Shuster (R)/ Pennsylvania 9th
Rep. Lou Barletta (R)/ Pennsylvania 11th
Rep. Keith Rothfus (R)/ Pennsylvania 12th
Rep. Brendan Boyle (D)/ Pennsylvania 13th
Rep. Lloyd Smucker (R)/ Pennsylvania 16th
Rep. Matt Cartwright (D)/ Pennsylvania 17th
Rep. Conor Lamb (D)/ Pennsylvania 18th



Federation of American Hospitals represents America's investor-owned community hospitals and health systems.





PENNSYLVANIA FAH MEMBER FACILITIES

			Beds	Employees
REP. DWIGHT EVANS (D)/ PENNSYLVANIA 2ND				
2 HOSPITALS				
Fairmount Behavioral	Philadelphia	Universal Health Services	239	550
Kindred Hospital South Philadelphia	Philadelphia	Kindred	58	134
REP. MIKE KELLY (R)/ PENNSYLVANIA 3RD				
2 HOSPITALS				
Clarion Psychiatric Center	Clarion	Universal Health Services	74	164
HealthSouth Rehabilitation Hospital of Erie	Erie	Encompass Health	108	192
REP. SCOTT PERRY (R)/ PENNSYLVANIA 4TH				
2 HOSPITALS				
HealthSouth Rehabilitation Hospital of Mechanicsburg	Mechanicsburg	Encompass Health	75	229
HealthSouth Rehabilitation Hospital of York	York	Encompass Health	90	273
REP. GLENN THOMPSON (R)/ PENNSYLVANIA 5TH				
2 HOSPITALS				
HealthSouth Nittany Valley Rehabilitation Hospital	Pleasant Gap	Encompass Health	73	206
The Meadows/Universal Community Behavioral Health	Centre Hall	Universal Health Services	107	224
REP. RYAN COSTELLO (R)/ PENNSYLVANIA 6TH				
1 HOSPITAL				
HealthSouth Reading Rehabilitation Hospital	Reading	Encompass Health	60	197
VACANT/ PENNSYLVANIA 7TH				
4 HOSPITALS				
Brooke Glen Behavioral Hospital	Fort Washington	Universal Health Services	146	348
Horsham Clinic	Ambler	Universal Health Services	206	496
Keystone Center	Chester	Universal Health Services	146	177
Kindred Hospital Philadelphia - Havertown	Havertown	Kindred	57	179

^
BACK
TO TOP



PENNSYLVANIA FAH MEMBER FACILITIES

			Beds	Employees
REP. BRIAN FITZPATRICK (R)/ PENNSYLVANIA 8TH				
2 HOSPITALS				
Foundations Behavioral Health	Doylestown	Universal Health Services	106	389
St. Mary Rehabilitation Hospital	Langhorne	Kindred	50	91
REP. BILL SHUSTER (R)/ PENNSYLVANIA 9TH				
5 HOSPITALS				
Conemaugh Meyersdale Medical Center	Meyersdale	LifePoint Health	20	133
Conemaugh Miners Medical Center	Hastings	LifePoint Health	30	133
HealthSouth Rehabilitation Hospital of Altoona	Altoona	Encompass Health	80	352
Nason Hospital	Roaring Spring	LifePoint Health	45	313
Roxbury Treatment Center	Shippensburg	Universal Health Services	112	160
REP. LOU BARLETTA (R)/ PENNSYLVANIA 11TH				
4 HOSPITALS				
Berwick Hospital Center	Berwick	Community Health Systems	101	257
First Hospital Wyoming Valley	Kingston	Community Health Systems	127	361
Geisinger HealthSouth Rehabilitation Hospital	Danville	Encompass Health	42	211
Tyler Memorial Hospital	Tunkhannock	Community Health Systems	60	157
REP. KEITH ROTHFUS (R)/ PENNSYLVANIA 12TH				
2 HOSPITALS				
Conemaugh Memorial Medical Center	Johnstown	LifePoint Health	539	3,644
HealthSouth Harmarville Rehabilitation Hospital	Pittsburgh	Encompass Health	162	300
REP. BRENDAN BOYLE (D)/ PENNSYLVANIA 13TH				
2 HOSPITALS				
Friends Hospital	Philadelphia	Universal Health Services	219	548
Kindred Hospital Philadelphia	Philadelphia	Kindred	52	146
REP. LLOYD SMUCKER (R)/ PENNSYLVANIA 16TH				
1 HOSPITAL				
Lancaster Rehabilitation Hospital	Lancaster	Kindred	59	255



[BACK TO TOP](#)



PENNSYLVANIA FAH MEMBER FACILITIES

			Beds	Employees
REP. MATT CARTWRIGHT (D)/ PENNSYLVANIA 17TH				
3 HOSPITALS				
Moses Taylor Hospital	Scranton	Community Health Systems	217	903
Regional Hospital of Scranton	Scranton	Community Health Systems	328	902
Wilkes-Barre General Hospital	Wilkes-Barre	Community Health Systems	547	1,661
REP. CONOR LAMB (D)/ PENNSYLVANIA 18TH				
1 HOSPITAL				
HealthSouth Rehabilitation Hospital of Sewickley	Sewickley	Encompass Health	44	142

^
BACK
TO TOP