



# OKLAHOMA

## FAH MEMBER FACILITIES

### SENATE

Sen. James M. Inhofe (R)

Sen. James Lankford (R)

### HOUSE *(Click name to view the district)*

Vacant / Oklahoma 1st

Rep. Markwayne Mullin (R)/ Oklahoma 2nd

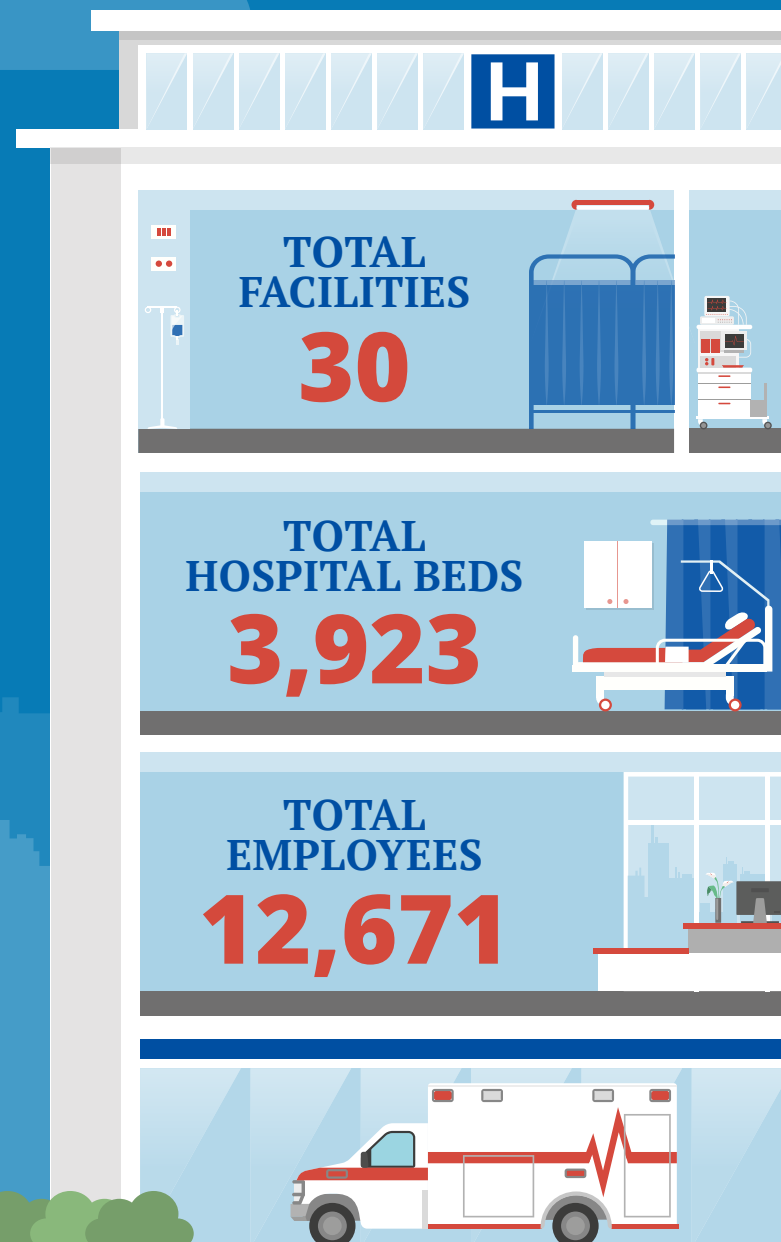
Rep. Frank Lucas (R)/ Oklahoma 3rd

Rep. Tom Cole (R)/ Oklahoma 4th

Rep. Steve Russell (R)/ Oklahoma 5th



Federation of American Hospitals represents America's investor-owned community hospitals and health systems.





# OKLAHOMA FAH MEMBER FACILITIES

			Beds	Employees
<b>VACANT / OKLAHOMA 1ST</b>				
<b>9 HOSPITALS</b>				
Bailey Medical Center	Owasso	Ardent	73	169
Hillcrest Hospital - South	Tulsa	Ardent	180	586
Hillcrest Medical Center	Tulsa	Ardent	620	1,837
Shadow Mountain	Tulsa	Universal Health Services	249	452
Shadow Mountain Hope	Tulsa	Universal Health Services	12	
Shadow Mountain Riverside	Tulsa	Universal Health Services	56	
St. John Rehabilitation Hospital	Tulsa	HealthSouth	22	90
Tulsa Spine & Specialty Hospital	Tulsa	Ardent	38	220
Oklahoma Heart Institute	Tulsa	Ardent		223
<b>REP. MARKWAYNE MULLIN (R)/ OKLAHOMA 2ND</b>				
<b>6 HOSPITALS</b>				
AllianceHealth Durant	Durant	Community Health Systems	148	464
AllianceHealth Madill	Madill	Community Health Systems	25	74
Hillcrest Hospital - Claremore	Claremore	Ardent	81	266
Hillcrest Hospital - Henryetta	Henryetta	Ardent	41	111
Shadow Mountain Eagle Creek	Kansas	Universal Health Services	20	
Hillcrest Hospital Pryor	Pryor	Ardent	48	116
<b>REP. FRANK LUCAS (R)/ OKLAHOMA 3RD</b>				
<b>5 HOSPITALS</b>				
AllianceHealth Clinton	Clinton	Community Health Systems	56	156
AllianceHealth Ponca City	Ponca City	Community Health Systems	140	377
AllianceHealth Woodward	Woodward	Community Health Systems	87	284
Hillcrest Hospital - Cushing	Cushing	Ardent	99	170
St. Marys Regional Medical Centre	Enid	Universal Health Services	229	606
<b>REP. TOM COLE (R)/ OKLAHOMA 4TH</b>				
<b>2 HOSPITALS</b>				

BACK TO TOP



# OKLAHOMA FAH MEMBER FACILITIES

			Beds	Employees
AllianceHealth Midwest	Midwest City	Community Health Systems	255	885
Southwestern Medical Center	Lawton	RCCH HealthCare Partners	199	564
<b>REP. STEVE RUSSELL (R)/ OKLAHOMA 5TH</b>				
<b>8 HOSPITALS</b>				
AllianceHealth Deaconess	Oklahoma City	Community Health Systems	291	694
AllianceHealth Seminole	Seminole	Community Health Systems	32	89
Cedar Ridge Hospital	Oklahoma City	Universal Health Services	60	210
Cedar Ridge/Bethany Behavioral Health	Bethany	Universal Health Services	56	81
Mercy Rehabilitation Hospital of Oklahoma City	Oklahoma City	Kindred	50	51
OU Medical Center	Oklahoma City	HCA	671	3,572
Children's Hospital at OU Medical Center	Oklahoma City	HCA		
OU Medical Center Edmond	Edmond	HCA	85	324

^  
BACK  
TO TOP