



# OHIO

## FAH MEMBER FACILITIES

### SENATE

Sen. Sherrod Brown (D)

Sen. Rob Portman (R)

### HOUSE *(Click name to view the district)*

Rep. Brad Wenstrup (R)/ Ohio 2nd

Rep. Jim Jordan (R)/ Ohio 4th

Rep. Bob Latta (R)/ Ohio 5th

Rep. Bill Johnson (R)/ Ohio 6th

Rep. Michael Turner (R)/ Ohio 10th

Rep. Marcia L. Fudge (D)/ Ohio 11th

Rep. Troy Balderson (R)/ Ohio 12th

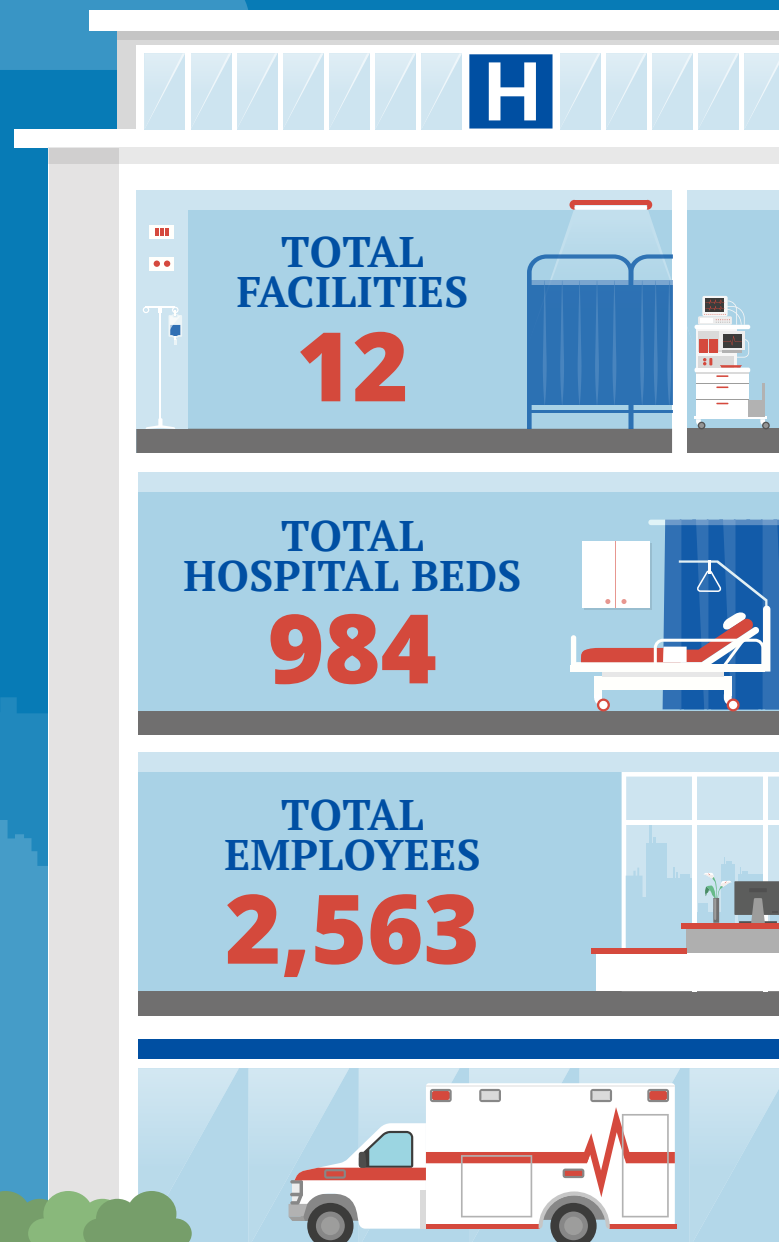
Rep. Tim Ryan (D)/ Ohio 13th

Rep. David Joyce (R)/ Ohio 14th

Rep. Steve Stivers (R)/ Ohio 15th



Federation of American Hospitals represents America's investor-owned community hospitals and health systems.





# OHIO FAH MEMBER FACILITIES

			Beds	Employees
<b>REP. BRAD WENSTRUP (R)/ OHIO 2ND</b>				
<b>1 HOSPITAL</b>				
HealthSouth Rehabilitation Hospital of Cincinnati	Cincinnati	Encompass Health	100	282
<b>REP. JIM JORDAN (R)/ OHIO 4TH</b>				
<b>1 HOSPITAL</b>				
Kindred Hospital Lima	Lima	Kindred	26	132
<b>REP. BOB LATTA (R)/ OHIO 5TH</b>				
<b>1 HOSPITAL</b>				
Arrowhead Behavioral Health	Maumee	Universal Health Services	48	115
<b>REP. BILL JOHNSON (R)/ OHIO 6TH</b>				
<b>1 HOSPITAL</b>				
Fox Run Center for Children and Adolescents	Saint Clairsville	Universal Health Services	100	94
<b>REP. MICHAEL TURNER (R)/ OHIO 10TH</b>				
<b>2 HOSPITALS</b>				
HealthSouth Rehabilitation Hospital of Dayton	Dayton	Encompass Health	50	96
Kindred Hospital Dayton	Dayton	Kindred	67	218
<b>REP. MARCIA L. FUDGE (D)/ OHIO 11TH</b>				
<b>1 HOSPITAL</b>				
University Rehabilitation Hospital	Beachwood	Kindred	50	211
<b>REP. TROY BALDERSON (R)/ OHIO 12TH</b>				
<b>2 HOSPITALS</b>				
Foundations for Living	Mansfield	Universal Health Services	84	117
Kindred Hospital Central Ohio	Mansfield	Kindred	33	123
<b>REP. TIM RYAN (D)/ OHIO 13TH</b>				
<b>1 HOSPITALS</b>				
Belmont Pines Hospital	Youngstown	Universal Health Services	102	220

^  
BACK  
TO TOP



# OHIO FAH MEMBER FACILITIES

			Beds	Employees
<b>REP. DAVID JOYCE (R)/ OHIO 14TH</b>				
<b>1 HOSPITAL</b>				
Windsor Laurelwood Center	Willoughby	Universal Health Services	159	340
<b>REP. STEVE STIVERS (R)/ OHIO 15TH</b>				
<b>1 HOSPITAL</b>				
Clinton Memorial Hospital	Wilmington	RCCH HealthCare Partners	165	615

^  
BACK  
TO TOP