



# NORTH CAROLINA

## FAH MEMBER FACILITIES

### SENATE

Sen. Richard Burr (R)

Sen. Thom Tillis (R)

### HOUSE *(Click name to view the district)*

Rep. G.K. Butterfield (D)/ North Carolina 1st

Rep. Walter Jones (R)/ North Carolina 3rd

Rep. David Price (D)/ North Carolina 4th

Rep. Virginia Foxx (R)/ North Carolina 5th

Rep. Mark Walker (R)/ North Carolina 6th

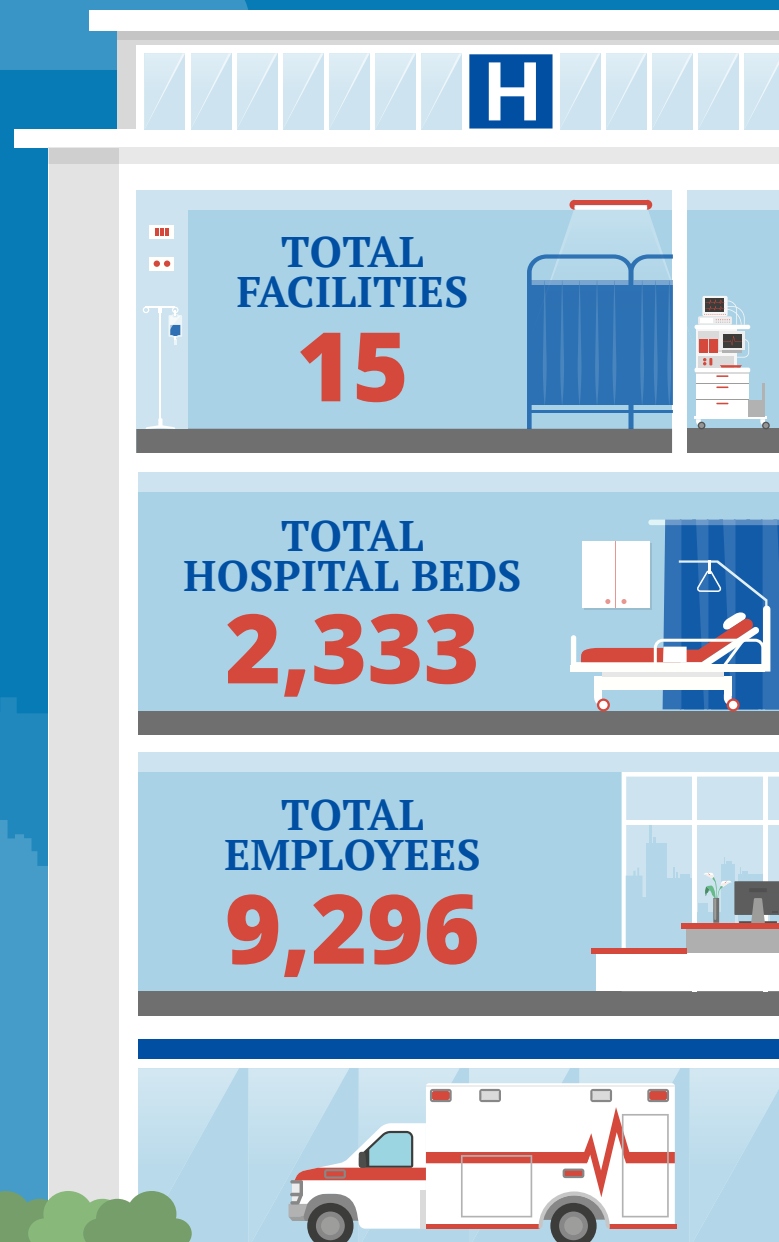
Rep. Patrick McHenry (R)/ North Carolina 10th

Rep. Mark Meadows (R)/ North Carolina 11th

Rep. Ted Budd (R)/ North Carolina 13th



Federation of American Hospitals represents America's investor-owned community hospitals and health systems.





# NORTH CAROLINA FAH MEMBER FACILITIES

			Beds	Employees
<b>REP. G.K. BUTTERFIELD (D)/ NORTH CAROLINA 1ST</b>				
<b>2 HOSPITALS</b>				
Maria Parham Medical Center	Henderson	LifePoint Health	102	695
Wilson Medical Center	Wilson	LifePoint Health	384	1,072
<b>REP. WALTER JONES (R)/ NORTH CAROLINA 3RD</b>				
<b>1 HOSPITAL</b>				
Brynn Marr Hospital	Jacksonville	Universal Health Services	102	202
<b>REP. DAVID PRICE (D)/ NORTH CAROLINA 4TH</b>				
<b>1 HOSPITAL</b>				
Holly Hill Hospital	Raleigh	Universal Health Services	228	604
<b>REP. VIRGINIA FOXX (R)/ NORTH CAROLINA 5TH</b>				
<b>1 HOSPITAL</b>				
Old Vineyard Behavioral Health Services	Winston Salem	Universal Health Services	104	284
<b>REP. MARK WALKER (R)/ NORTH CAROLINA 6TH</b>				
<b>2 HOSPITALS</b>				
Central Carolina Hospital	Sanford	LifePoint Health	137	720
Person Memorial Hospital	Roxboro	LifePoint Health	98	288
<b>REP. PATRICK MCHENRY (R)/ NORTH CAROLINA 10TH</b>				
<b>2 HOSPITALS</b>				
Frye Regional Medical Center	Hickory	LifePoint Health	355	1,596
Rutherford Regional Health System	Rutherfordton	LifePoint Health	143	718
<b>REP. MARK MEADOWS (R)/ NORTH CAROLINA 11TH</b>				
<b>3 HOSPITALS</b>				
Harris Regional Hospital	Sylva	LifePoint Health	86	880
Haywood Regional Medical Center	Clyde	LifePoint Health	169	908
Swain County Hospital	Bryson City	LifePoint Health	48	87

^  
BACK  
TO TOP



## REP. TED BUDD (R)/ NORTH CAROLINA 13TH 3 HOSPITALS

			Beds	Employees
Davis Regional Medical Center	Statesville	Community Health Systems	130	426
Kindred Hospital Greensboro	Greensboro	Kindred	124	239
Lake Norman Regional Medical Center	Mooresville	Community Health Systems	123	577

^  
BACK  
TO TOP