



NEW MEXICO

FAH MEMBER FACILITIES

SENATE

Sen. Martin Heinrich (D)

Sen. Tom Udall (D)

HOUSE *(Click name to view the district)*

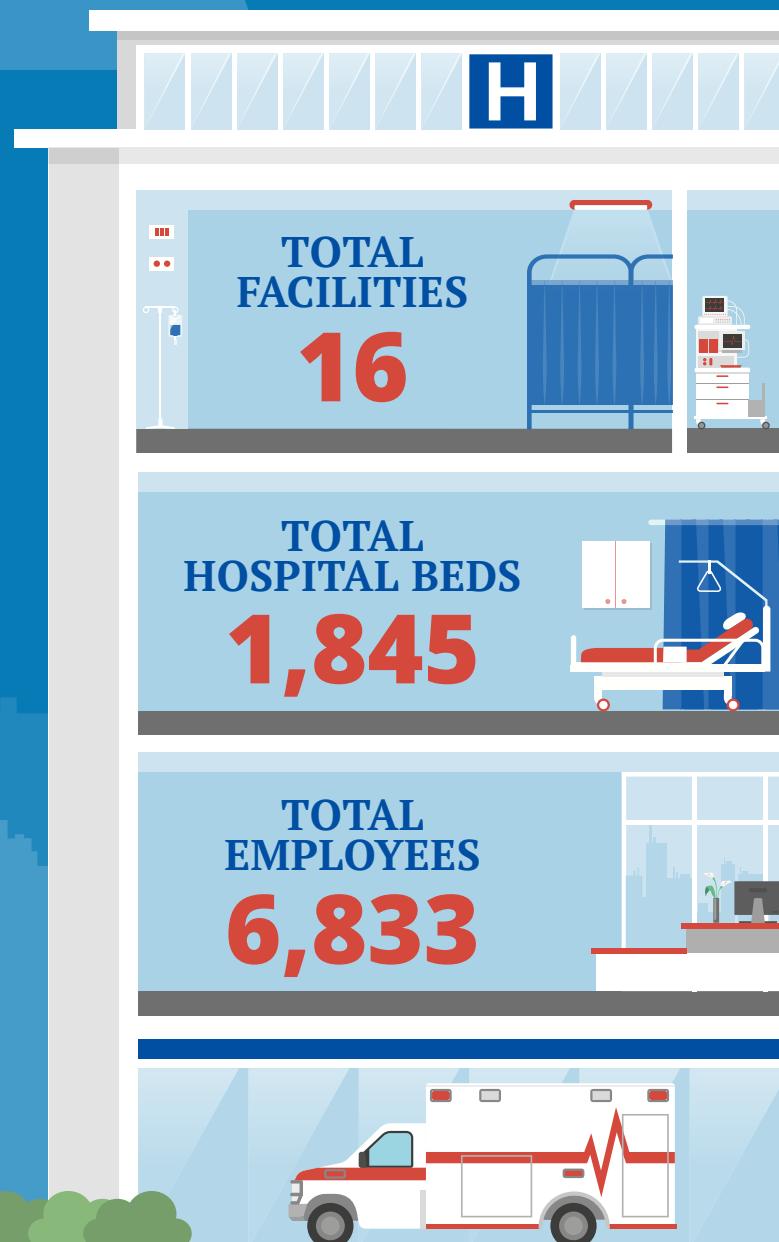
Rep. Michelle Lujan Grisham (D)/ New Mexico 1st

Rep. Steve Pearce (R)/ New Mexico 2nd

Rep. Ben Lujan (D)/ New Mexico 3rd



Federation of American Hospitals represents America's investor-owned community hospitals and health systems.



NEW MEXICO FAH MEMBER FACILITIES

			Beds	Employees
REP. MICHELLE LUJAN GRISHAM (D)/ NEW MEXICO 1ST				
6 HOSPITALS				
HealthSouth Rehabilitation Hospital	Albuquerque	Encompass Health	87	271
Kindred Hospital Albuquerque	Albuquerque	Kindred	61	194
Lovelace Medical Center	Albuquerque	Ardent	318	979
Lovelace Rehabilitation Hospital	Albuquerque	Ardent	62	170
Lovelace Westside Hospital	Albuquerque	Ardent	80	247
Lovelace Women's Hospital	Albuquerque	Ardent	120	583
REP. STEVE PEARCE (R)/ NEW MEXICO 2ND				
8 HOSPITALS				
Carlsbad Medical Center	Carlsbad	Community Health Systems	115	327
Eastern New Mexico Medical Center	Roswell	Community Health Systems	162	439
Lea Regional Medical Center	Hobbs	Community Health Systems	201	313
Lovelace Regional Hospital - Roswell	Roswell	Ardent	26	180
Memorial Medical Center of Las Cruces	Las Cruces	LifePoint Health	199	1,259
Mesilla Valley Hospital	Las Cruces	Universal Health Services	120	246
Mimbres Memorial Hospital	Deming	Quorum Health	25	236
Mountainview Regional Medical Center	Las Cruces	Community Health Systems	168	911
REP. BEN LUJAN (D)/ NEW MEXICO 3RD				
2 HOSPITALS				
Alta Vista Regional Hospital	Las Vegas	Quorum Health	54	207
Los Alamos Medical Center	Los Alamos	LifePoint Health	47	271

^
BACK
TO TOP