



# NEW HAMPSHIRE

## FAH MEMBER FACILITIES

### SENATE

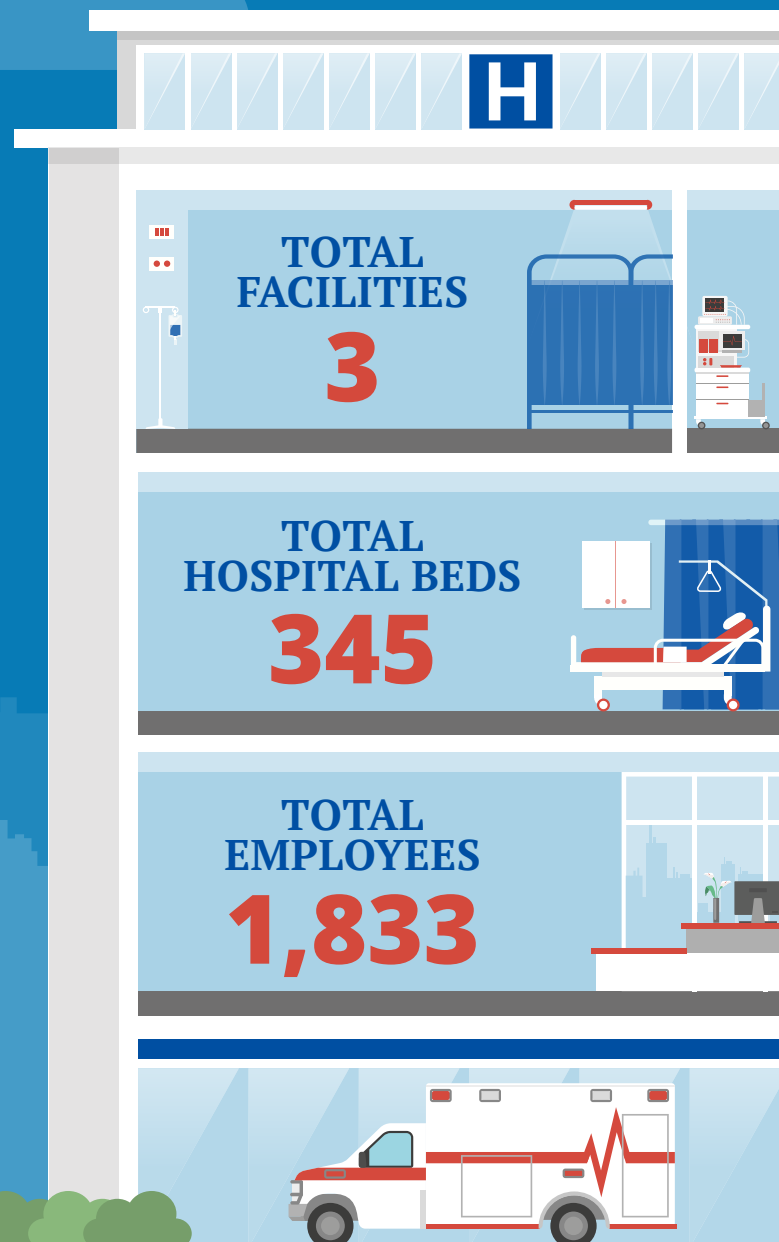
Sen. Maggie Hassan (D)  
Sen. Jeanne Shaheen (D)

### HOUSE *(Click name to view the district)*

Rep. Carol Shea-Porter (D)/ New Hampshire 1st  
Rep. Ann Kuster (D)/ New Hampshire 2nd



Federation of American Hospitals represents America's investor-owned community hospitals and health systems.





# NEW HAMPSHIRE FAH MEMBER FACILITIES

			Beds	Employees
<b>REP. CAROL SHEA-PORTER (D)/ NEW HAMPSHIRE 1ST</b>				
<b>2 HOSPITALS</b>				
Parkland Medical Center	Derry	HCA	86	598
Portsmouth Regional Hospital	Portsmouth	HCA	209	1,073
<b>REP. ANN KUSTER (D)/ NEW HAMPSHIRE 2ND</b>				
<b>1 HOSPITAL</b>				
HealthSouth Rehabilitation Hospital	Concord	Encompass Health	50	162

^  
BACK  
TO TOP