



MONTANA

FAH MEMBER FACILITIES

SENATE

Sen. Steve Daines (R)

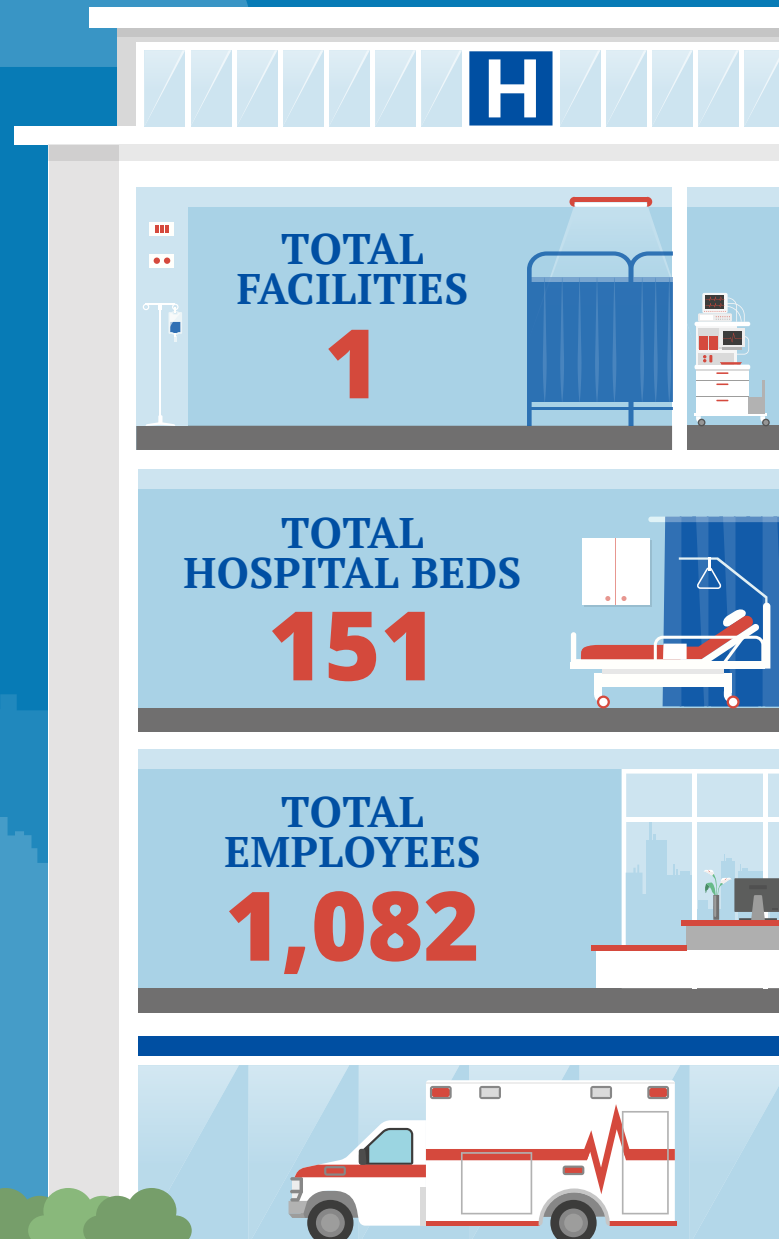
Sen. Jon Tester (D)

HOUSE *(Click name to view the district)*

Rep. Greg Gianforte (R)/ Montana At-Large



Federation of American Hospitals represents America's investor-owned community hospitals and health systems.





MONTANA FAH MEMBER FACILITIES

REP. GREG GIANFORTE (R)/ MONTANA AT-LARGE
1 HOSPITAL

			Beds	Employees
Community Medical Center	Missoula	RCCH HealthCare Partners	151	1,082

^
BACK
TO TOP