



MISSOURI

FAH MEMBER FACILITIES

SENATE

Sen. Roy Blunt (R)

Sen. Claire McCaskill (D)

HOUSE *(Click name to view the district)*

Rep. William Lacy Clay (D)/ Missouri 1st

Rep. Ann Wagner (R)/ Missouri 2nd

Rep. Vicky Hartzler (R)/ Missouri 4th

Rep. Emanuel Cleaver (D)/ Missouri 5th

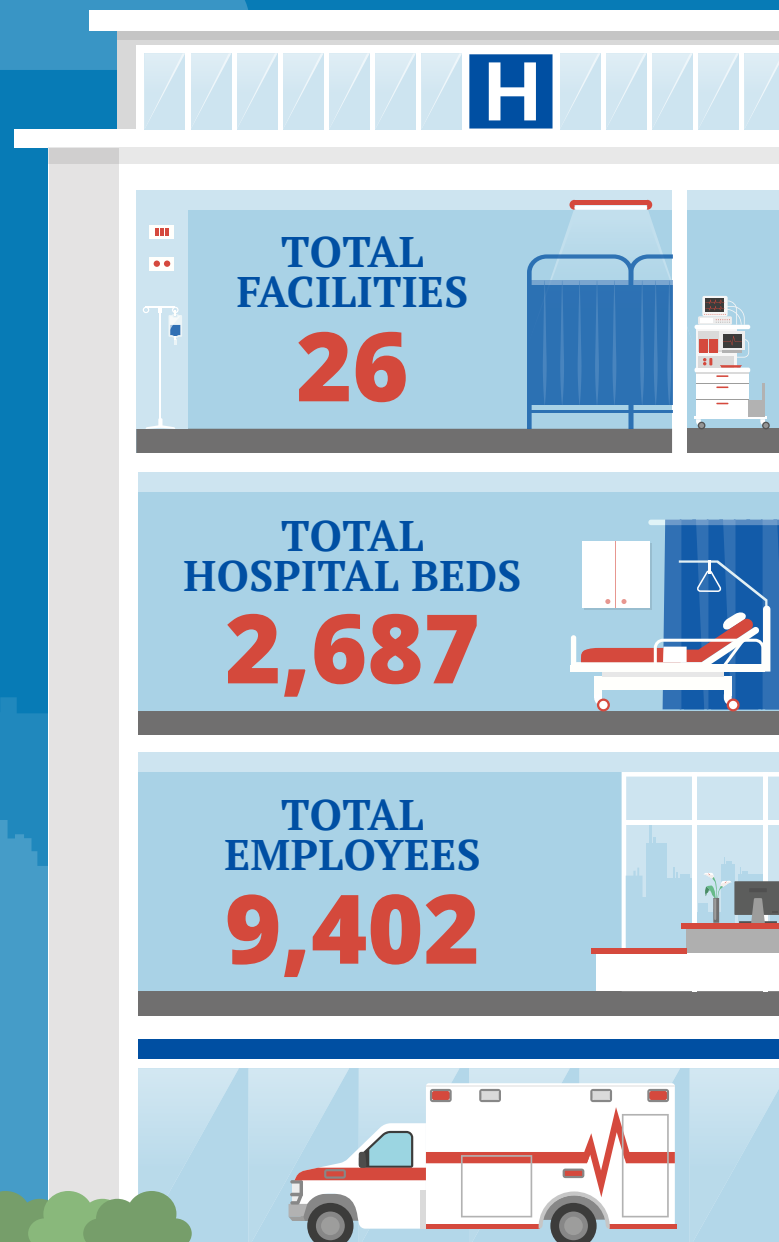
Rep. Sam Graves (R)/ Missouri 6th

Rep. Billy Long (R)/ Missouri 7th

Rep. Jason Smith (R)/ Missouri 8th



Federation of American Hospitals represents America's investor-owned community hospitals and health systems.





MISSOURI FAH MEMBER FACILITIES

			Beds	Employees
REP. WILLIAM LACY CLAY (D)/ MISSOURI 1ST				
3 HOSPITALS				
Kindred Hospital St. Louis	St. Louis	Kindred	60	117
St. Louis Behavioral Medicine Institute	St. Louis	Universal Health Services		80
The Rehabilitation Institute of St. Louis	St. Louis	Encompass Health	96	384
REP. ANN WAGNER (R)/ MISSOURI 2ND				
4 HOSPITALS				
Des Peres Hospital	St. Louis	Tenet Healthcare	143	585
Kindred Hospital St. Louis - St. Anthony's	St. Louis	Kindred	38	110
Mercy Rehabilitation Hospital of St. Louis	Chesterfield	Kindred	90	64
St. Luke's Rehabilitation Hospital	Chesterfield	Kindred	35	52
REP. VICKY HARTZLER (R)/ MISSOURI 4TH				
5 HOSPITALS				
Belton Regional Medical Center	Belton	HCA	71	311
Cass Regional Medical Center	Harrisonville	HCA	35	180
Heartland Behavioral Health	Nevada	Universal Health Services	151	223
Moberly Regional Medical Center	Moberly	Community Health Systems	101	282
Rusk Rehabilitation Center - Columbia	Columbia	Encompass Health	60	236
REP. EMANUEL CLEAVER (D)/ MISSOURI 5TH				
7 HOSPITALS				
Centerpoint Medical Center	Independence	HCA	257	1,402
Kindred Hospital Kansas City	Kansas City	Kindred	167	177
Lafayette Regional Health Center	Lexington	HCA	32	238
Research Medical Center	Kansas City	HCA	590	2,321
Research Medical Center Brookside	Kansas City	HCA		
Research Psychiatric Center	Kansas City	HCA		
Two Rivers Behavioral Health System	Kansas City	Universal Health Services	105	215

^
BACK
TO TOP



MISSOURI FAH MEMBER FACILITIES

			Beds	Employees
REP. SAM GRAVES (R)/ MISSOURI 6TH				
4 HOSPITALS				
Carroll County Memorial Hospital	Carrollton	HCA	25	120
Kindred Hospital Northland	Kansas City	Kindred	35	132
Lee's Summit Medical Center	Lee's Summit	HCA	64	473
Northeast Regional Medical Center	Kirksville	Community Health Systems	115	412
REP. BILLY LONG (R)/ MISSOURI 7TH				
1 HOSPITAL				
Mercy Rehabilitation Hospital of Springfield	Springfield	Kindred	60	46
REP. JASON SMITH (R)/ MISSOURI 8TH				
2 HOSPITALS				
Poplar Bluff Regional Medical Center	Poplar Bluff	Community Health Systems	241	958
Twin Rivers Regional Medical Center	Kennett	Community Health Systems	116	284

^
BACK
TO TOP