



MISSISSIPPI

FAH MEMBER FACILITIES

SENATE

Sen. Roger Wicker (R)

Sen. Cindy Hyde-Smith (R)

HOUSE *(Click name to view the district)*

Rep. Trent Kelly (R)/ Mississippi 1st

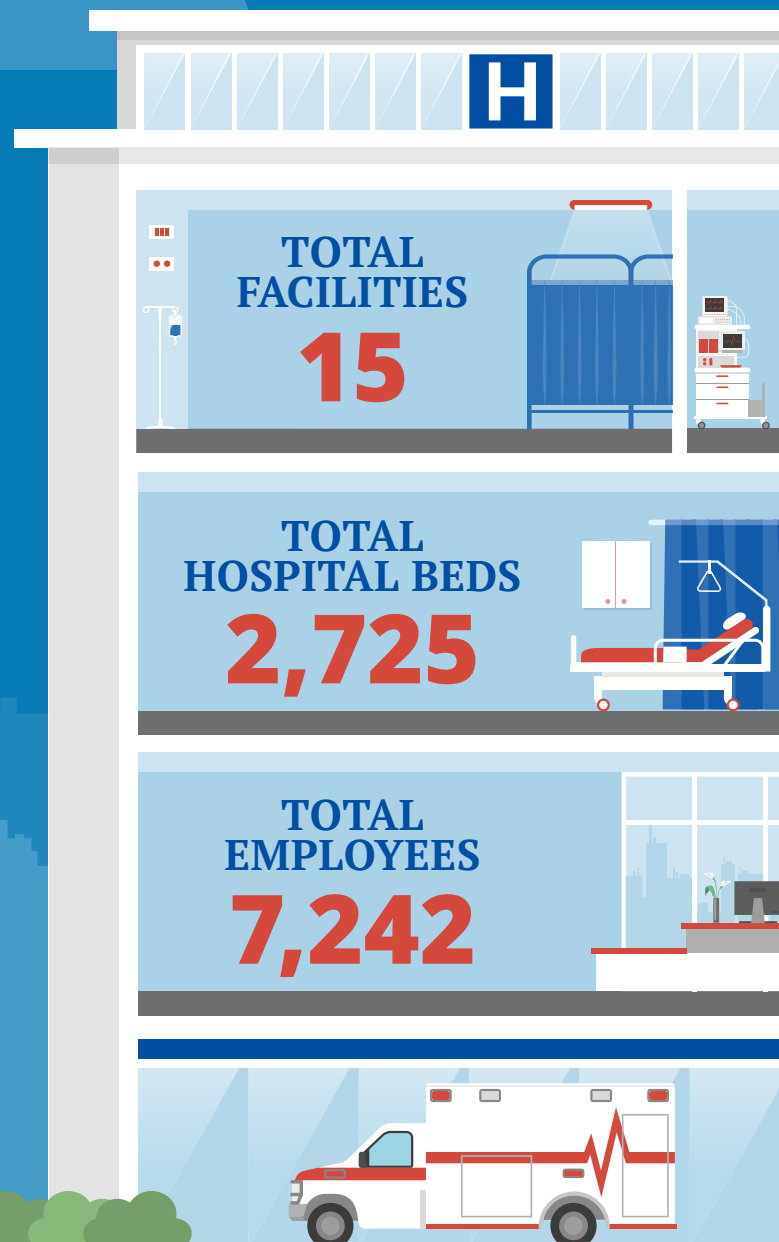
Rep. Bennie Thompson (D)/ Mississippi 2nd

Rep. Gregg Harper (R)/ Mississippi 3rd

Rep. Steven Palazzo (R)/ Mississippi 4th



Federation of American Hospitals represents America's investor-owned community hospitals and health systems.





MISSISSIPPI FAH MEMBER FACILITIES

			Beds	Employees
REP. TRENT KELLY (R)/ MISSISSIPPI 1ST				
2 HOSPITALS				
Diamond Grove Center for Children	Louisville	Universal Health Services	55	143
Parkwood Behavioral Health System	Olive Branch	Universal Health Services	148	305
REP. BENNIE THOMPSON (D)/ MISSISSIPPI 2ND				
4 HOSPITALS				
Bolivar Medical Center	Cleveland	LifePoint Health	199	495
Merit Health Central	Jackson	Community Health Systems	429	868
Merit Health Madison	Canton	Community Health Systems	67	272
Merit Health River Region	Vicksburg	Community Health Systems	372	732
REP. GREGG HARPER (R)/ MISSISSIPPI 3RD				
6 HOSPITALS				
Alliance Health Center	Meridian	Universal Health Services	214	370
Brentwood Behavioral Healthcare of Mississippi	Flowood	Universal Health Services	105	278
Merit Health Natchez	Natchez	Community Health Systems	179	511
Merit Health Rankin	Brandon	Community Health Systems	149	294
Merit Health River Oaks	Flowood	Community Health Systems	160	662
Merit Health Woman's Hospital	Jackson	Community Health Systems	109	213
REP. STEVEN PALAZZO (R)/ MISSISSIPPI 4TH				
3 HOSPITALS				
Garden Park Medical Center	Gulfport	HCA	130	519
Merit Health Biloxi	Biloxi	Community Health Systems	198	694
Merit Health Wesley	Hattiesburg	Community Health Systems	211	886

^
BACK
TO TOP