



# MASSACHUSETTS

## FAH MEMBER FACILITIES

### SENATE

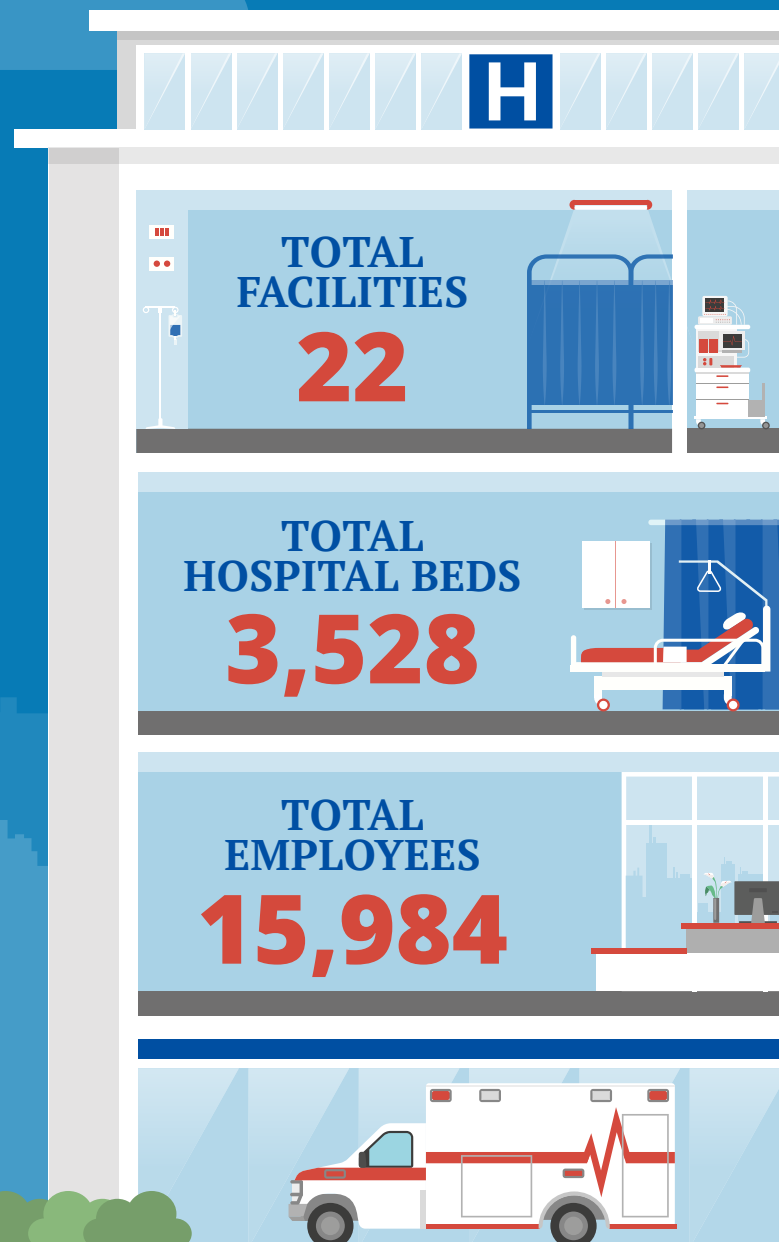
Sen. Edward Markey (D)  
Sen. Elizabeth Warren (D)

### HOUSE *(Click name to view the district)*

Rep. Richard E. Neal (D)/ Massachusetts 1st  
Rep. James McGovern (D)/ Massachusetts 2nd  
Rep. Niki Tsongas (D)/ Massachusetts 3rd  
Rep. Joseph P. Kennedy III (D)/ Massachusetts 4th  
Rep. Katherine Clark (D)/ Massachusetts 5th  
Rep. Michael E. Capuano (D)/ Massachusetts 7th  
Rep. Stephen F. Lynch (D)/ Massachusetts 8th  
Rep. William Keating (D)/ Massachusetts 9th



Federation of American Hospitals represents America's investor-owned community hospitals and health systems.





# MASSACHUSETTS FAH MEMBER FACILITIES

			Beds	Employees
<b>REP. RICHARD E. NEAL (D)/ MASSACHUSETTS 1ST</b>				
<b>1 HOSPITAL</b>				
HealthSouth Rehabilitation Hospital of Western Massachusetts	Ludlow	Encompass Health	53	228
<b>REP. JAMES MCGOVERN (D)/ MASSACHUSETTS 2ND</b>				
<b>2 HOSPITALS</b>				
Fairlawn Rehabilitation Hospital	Worcester	Encompass Health	110	376
Saint Vincent Hospital	Worcester	Tenet Healthcare	283	2,434
<b>REP. NIKI TSONGAS (D)/ MASSACHUSETTS 3RD</b>				
<b>3 HOSPITALS</b>				
Holy Family Hospital - Haverhill	Haverhill	Steward	122	525
Holy Family Hospital - Methuen	Methuen	Steward	261	1,523
Nashoba Valley Medical Center	Ayer	Steward	57	439
<b>REP. JOSEPH P. KENNEDY III (D)/ MASSACHUSETTS 4TH</b>				
<b>3 HOSPITALS</b>				
Arbour-Fuller Hospital	South Attleboro	Universal Health Services	103	361
Arbour-HRI Hospital	Brookline	Universal Health Services	62	234
Morton Hospital	Taunton	Steward	120	
<b>REP. KATHERINE CLARK (D)/ MASSACHUSETTS 5TH</b>				
<b>3 HOSPITALS</b>				
HealthSouth New England Rehabilitation Hospital	Woburn	Encompass Health	210	407
MetroWest Medical Center-Framingham	Framingham	Tenet Healthcare	147	
MetroWest Medical Center-Leonard Morse	Natick	Tenet Healthcare	152	
<b>REP. MICHAEL E. CAPUANO (D)/ MASSACHUSETTS 7TH</b>				
<b>2 HOSPITALS</b>				
Carney Hospital	Dorchester	Steward	159	1,133
St. Elizabeth's Medical Center	Brighton	Steward	267	2,397

  
 BACK  
 TO TOP



# MASSACHUSETTS FAH MEMBER FACILITIES

			Beds	Employees
<b>REP. STEPHEN F. LYNCH (D)/ MASSACHUSETTS 8TH</b>				
<b>6 HOSPITALS</b>				
Arbour Hospital	Boston	Universal Health Services	136	169
Good Samaritan Medical Center	Brockton	Steward	267	1,661
HealthSouth Braintree Rehabilitation Hospital	Braintree	Encompass Health	187	459
New England Sinai Hospital	Stoughton	Steward	182	
Norwood Hospital	Norwood	Steward	215	1,600
Westwood Lodge/Lowell Treatment Center	Westwood	Universal Health Services	130	382
<b>REP. WILLIAM KEATING (D)/ MASSACHUSETTS 9TH</b>				
<b>2 HOSPITALS</b>				
Pembroke Hospital	Pembroke	Universal Health Services	120	291
Saint Anne's Hospital	Fall River	Steward	185	1,365

^  
BACK  
TO TOP