



# KANSAS

## FAH MEMBER FACILITIES

### SENATE

Sen. Jerry Moran (R)

Sen. Pat Roberts (R)

### HOUSE *(Click name to view the district)*

Rep. Roger Marshall (R)/ Kansas 1st

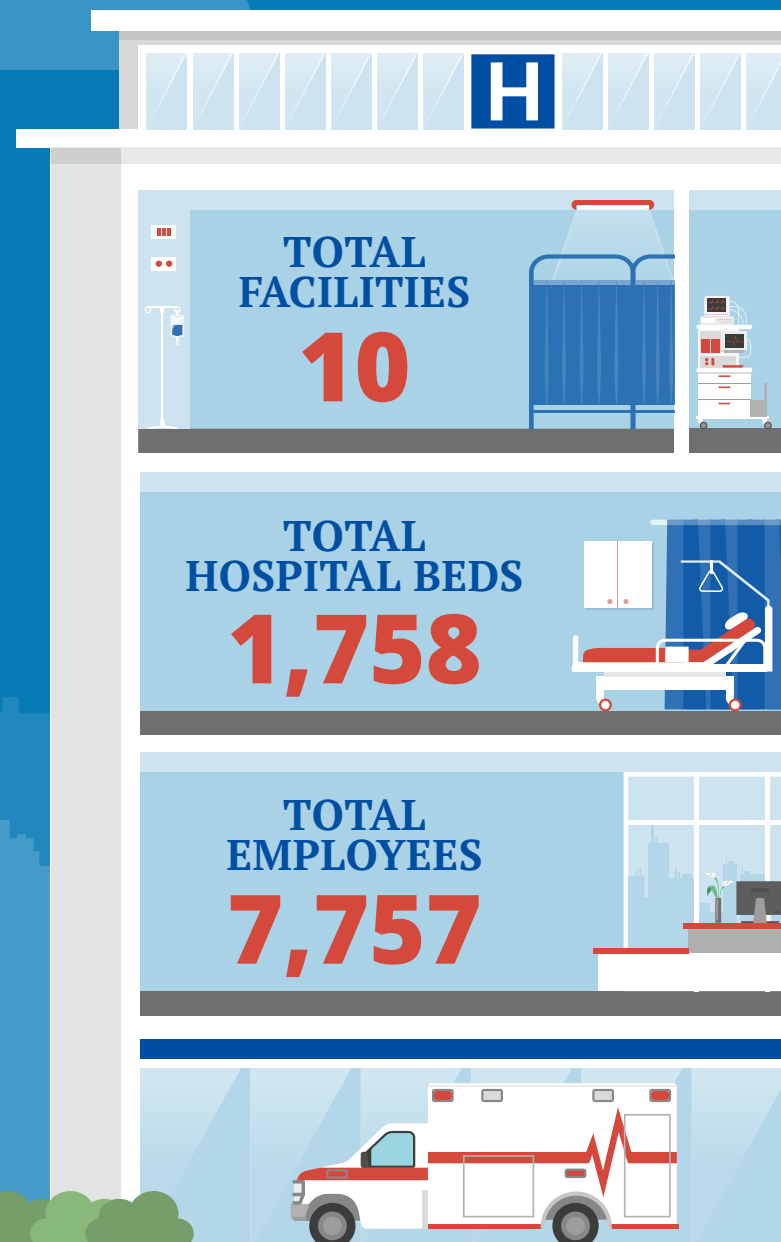
Rep. Lynn Jenkins (R)/ Kansas 2nd

Rep. Kevin Yoder (R)/ Kansas 3rd

Rep. Ron Estes (R)/ Kansas 4th



Federation of American Hospitals represents America's investor-owned community hospitals and health systems.



# KANSAS FAH MEMBER FACILITIES

			Beds	Employees
<b>REP. ROGER MARSHALL (R)/ KANSAS 1ST</b>				
<b>1 HOSPITAL</b>				
Western Plains Medical Complex	Dodge City	LifePoint Health	99	263
<b>REP. LYNN JENKINS (R)/ KANSAS 2ND</b>				
<b>3 HOSPITALS</b>				
Allen County Regional Hospital	Iola	HCA	25	146
Kansas Rehabilitation Hospital, a joint venture of Encompass Health and Stormont Vail Health	Topeka	Encompass Health	79	178
The University of Kansas St. Francis Campus	Topeka	Ardent	24	1,600
<b>REP. KEVIN YODER (R)/ KANSAS 3RD</b>				
<b>3 HOSPITALS</b>				
Menorah Medical Center	Overland Park	HCA	158	844
Midamerica Rehabilitation Hospital	Overland Park	Encompass Health	98	278
Overland Park Regional Medical Center	Overland Park	HCA	351	1,311
<b>REP. RON ESTES/ KANSAS 4TH</b>				
<b>3 HOSPITALS</b>				
Wesley Medical Center	Wichita	HCA	760	2,629
Wesley Rehabilitation Hospital, an affiliate of Encompass Health	Wichita	Encompass Health	65	225
Wesley Woodlawn Hospital & ER	Wichita	HCA	99	283

^  
BACK  
TO TOP