



IDAHO

FAH MEMBER FACILITIES

SENATE

Sen. Mike Crapo (R)

Sen. James E. Risch (R)

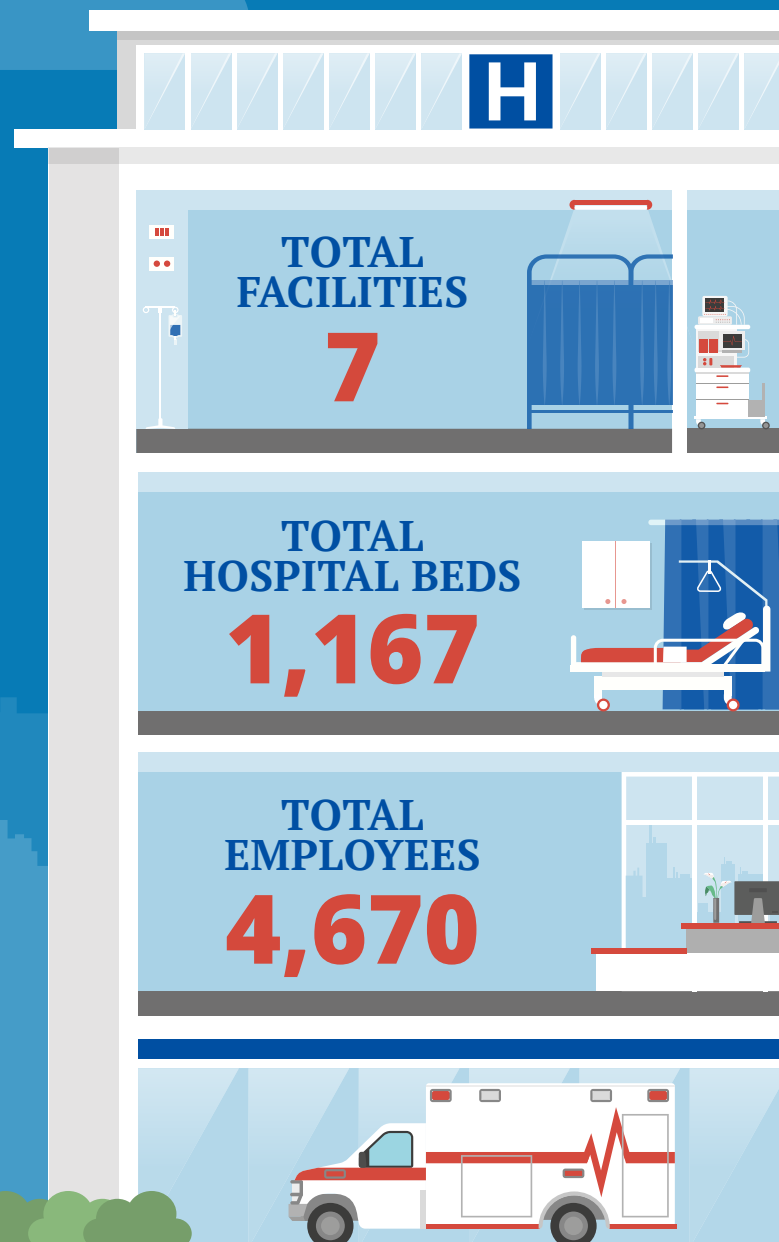
HOUSE *(Click name to view the district)*

Rep. Raul Labrador (R)/ Idaho 1st

Rep. Mike Simpson (R)/ Idaho 2nd



Federation of American Hospitals represents America's investor-owned community hospitals and health systems.





IDAHO FAH MEMBER FACILITIES

			Beds	Employees
REP. RAUL LABRADOR (R)/ IDAHO 1ST				
4 HOSPITALS				
Boulder Creek Academy	Bonnors Ferry	Universal Health Services	96	61
Northwest Academy	Naples	Universal Health Services	82	80
West Valley Medical Center	Caldwell	HCA	150	551
St. Joseph Regional Medical Center	Lewiston	RCCH HealthCare Providers	145	1,025
REP. MIKE SIMPSON (R)/ IDAHO 2ND				
3 HOSPITALS				
Eastern Idaho Regional Medical Center	Idaho Falls	HCA	334	1,399
Intermountain	Boise	Universal Health Services	155	254
Portneuf Medical Center	Pocatello	Ardent	205	1,300

^
BACK
TO TOP