



DISTRICT OF COLUMBIA

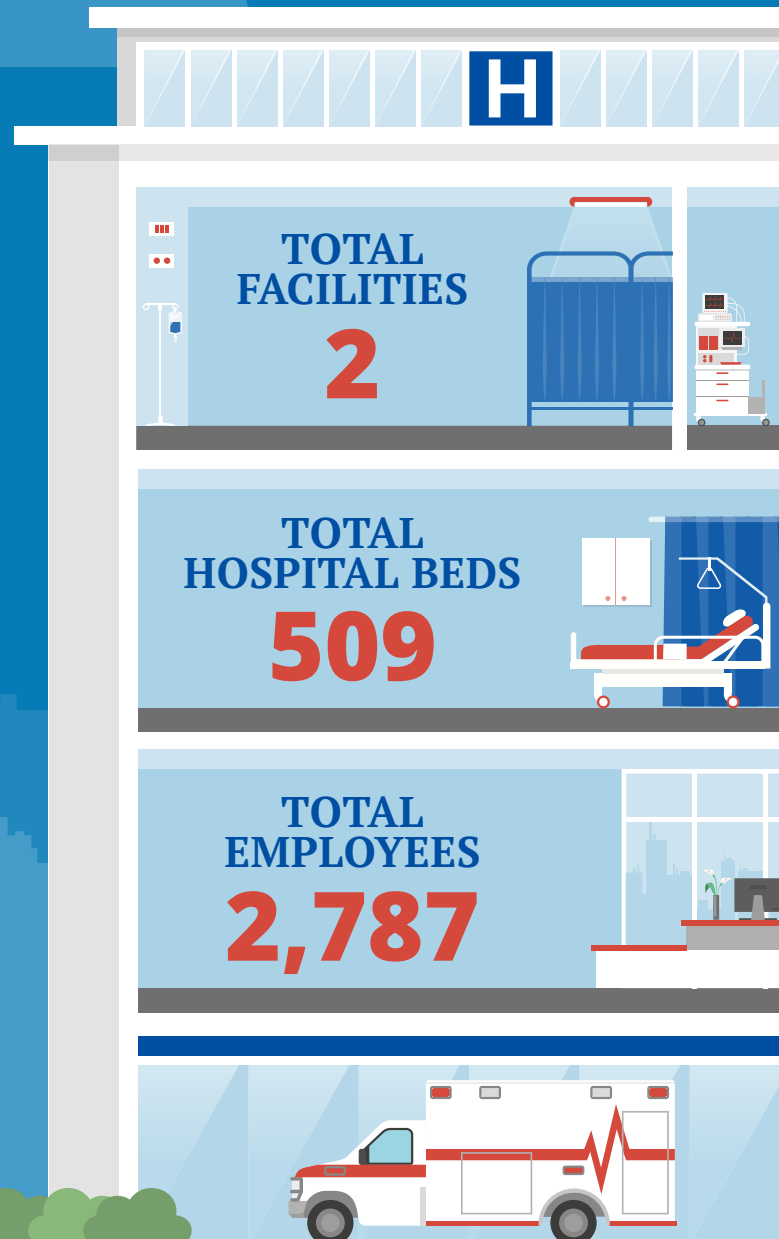
FAH MEMBER FACILITIES

HOUSE *(Click name to view the district)*

Del. Eleanor Holmes Norton (D)/ District of Columbia At-Large



Federation of American Hospitals represents America's investor-owned community hospitals and health systems.





			Beds	Employees
DEL. ELEANOR HOLMES NORTON (D)/ DISTRICT OF COLUMBIA AT-LARGE				
2 HOSPITALS				
George Washington Univ Hosp	Washington	Universal Health Services	385	2,478
Psychiatric Inst of Washington	Washington	Universal Health Services	124	309

^
BACK
TO TOP