



ARKANSAS

FAH MEMBER FACILITIES

SENATE

Sen. John Boozman (R)

Sen. Tom Cotton (R)

HOUSE *(Click name to view the district)*

Rep. Rick Crawford (R)/ Arkansas 1st

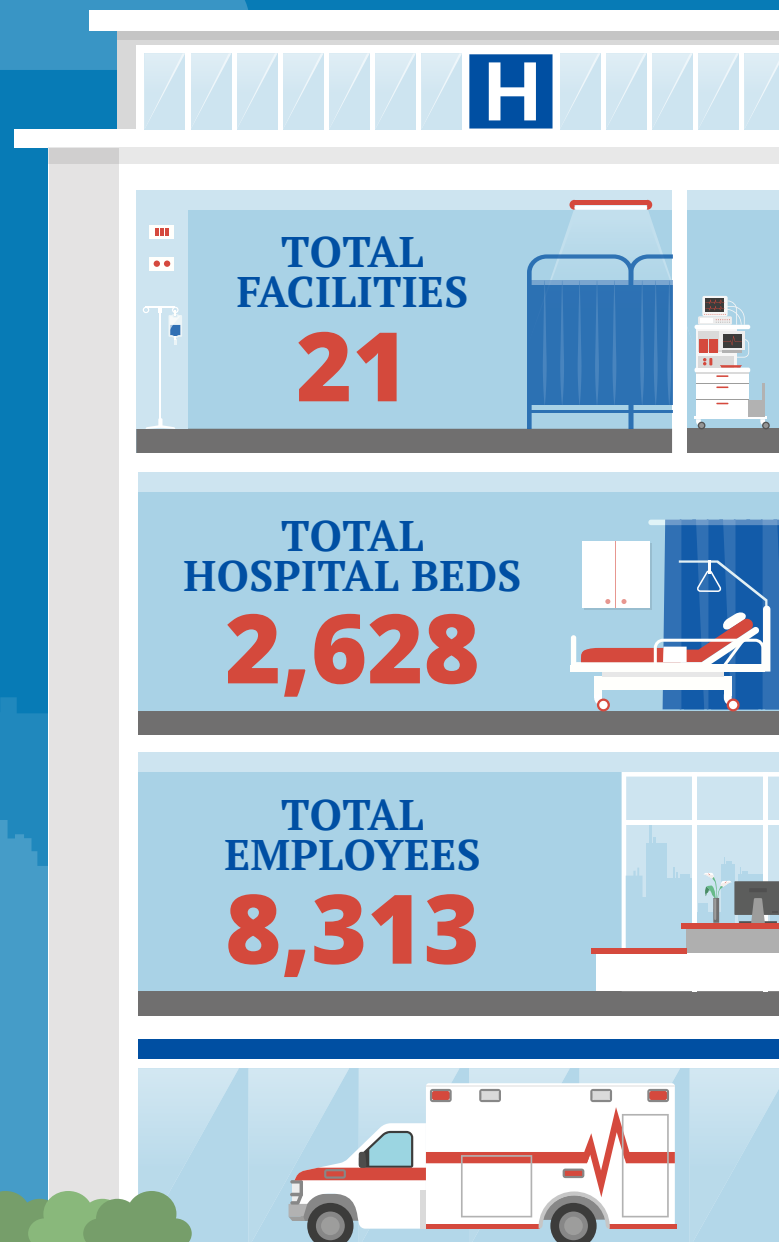
Rep. French Hill (R)/ Arkansas 2nd

Rep. Steve Womack (R)/ Arkansas 3rd

Rep. Bruce Westerman (R)/ Arkansas 4th



Federation of American Hospitals represents America's investor-owned community hospitals and health systems.





ARKANSAS FAH MEMBER FACILITIES

			Beds	Employees
REP. RICK CRAWFORD (R)/ ARKANSAS 1ST				
1 HOSPITALS				
HealthSouth Rehabilitation Hospital of Jonesboro	Jonesboro	Encompass Health	80	232
REP. FRENCH HILL (R)/ ARKANSAS 2ND				
5 HOSPITALS				
Bridgeway	North Little Rock	Universal Health Services	127	169
Pinnacle Pointe Hospital	Little Rock	Universal Health Services	124	294
Rivendell of Arkansas	Benton	Universal Health Services	77	165
Saline Memorial Hospital	Benton	RCCH HealthCare Partners	177	1,021
St. Vincent Rehabilitation Hospital	Sherwood	Encompass Health	80	256
REP. STEVE WOMACK (R)/ ARKANSAS 3RD				
11 HOSPITALS				
HealthSouth Rehabilitation Hospital, a Partner with Washington Regional	Fayetteville	Encompass Health	80	239
HealthSouth Rehabilitation Hospital of Fort Smith	Fort Smith	Encompass Health	80	171
Northwest Medical Center - Bentonville	Bentonville	Community Health Systems	128	478
Northwest Medical Center - Springdale	Springdale	Community Health Systems	222	733
Physicians' Specialty Hospital	Fayetteville	Community Health Systems	20	155
Saint Mary's Regional Medical Center	Russellville	RCCH HealthCare Partners	170	834
Siloam Springs Regional Hospital	Siloam Springs	Community Health Systems	73	212
Sparks Medical Center - Van Buren	Van Buren	Community Health Systems	103	107
Sparks Regional Medical Center	Fort Smith	Community Health Systems	492	1,396
Springwoods Behavioral Health	Fayetteville	Universal Health Services	80	138
Willow Creek Women's Hospital	Johnson	Community Health Systems	64	244

^
BACK
TO TOP



ARKANSAS FAH MEMBER FACILITIES

REP. BRUCE WESTERMAN (R)/ ARKANSAS 4TH 4 HOSPITALS

			Beds	Employees
Chi St. Vincent Hot Springs Rehabilitation Hospital	Hot Springs	Encompass Health	40	108
Medical Center of South Arkansas	El Dorado	Community Health Systems	166	485
National Park Medical Center	Hot Springs	RCCH HealthCare Partners	166	722
Wadley Regional Medical Center at Hope	Hope	IASIS	79	154

^
BACK
TO TOP