



# ARIZONA

## FAH MEMBER FACILITIES

### SENATE

Sen. Jeff Flake (R)

Sen. Jon Kyl (R)

### HOUSE *(Click name to view the district)*

Rep. Tom O'Halleran (D)/ Arizona 1st

Rep. Martha McSally (R)/ Arizona 2nd

Rep. Raul Grijalva (D)/ Arizona 3rd

Rep. Paul Gosar (R)/ Arizona 4th

Rep. Andy Biggs (R)/ Arizona 5th

Rep. David Schweikert (R)/ Arizona 6th

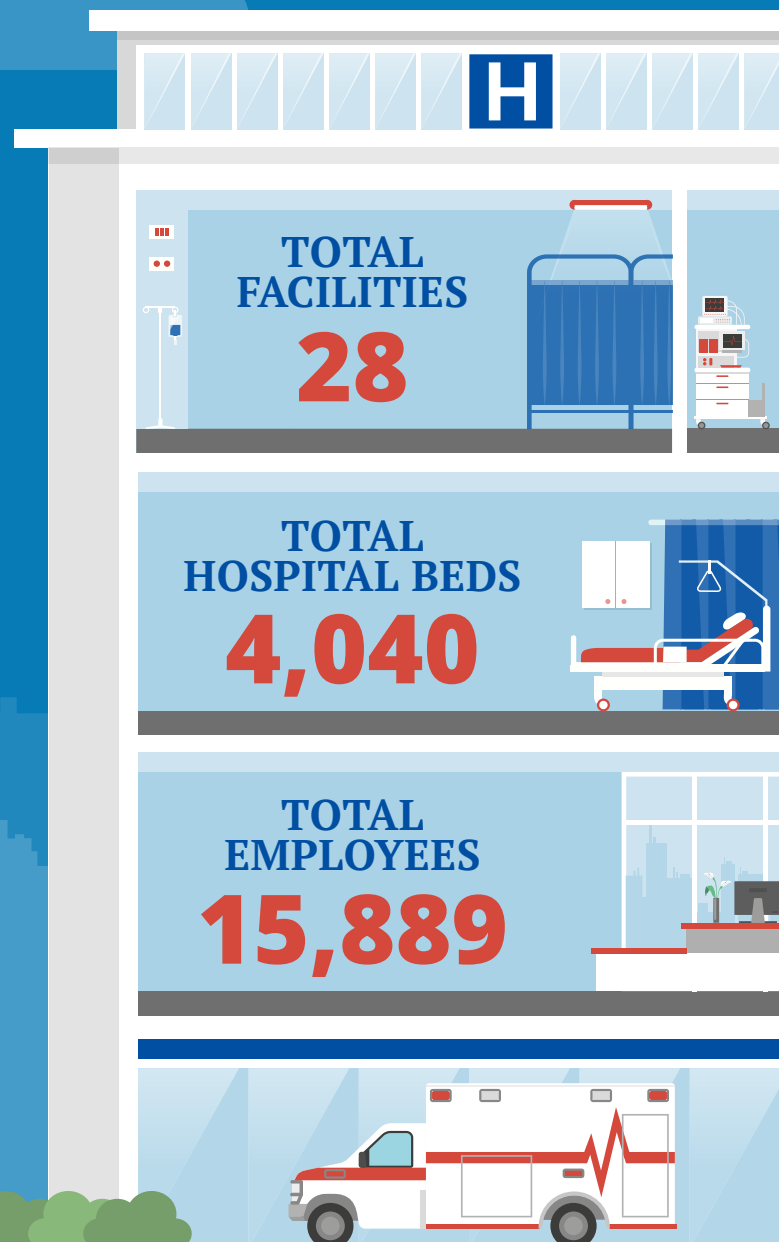
Rep. Ruben Gallego (D)/ Arizona 7th

Rep. Debbie Lesko (R)/ Arizona 8th

Rep. Kyrsten Sinema (D)/ Arizona 9th



Federation of American Hospitals represents America's investor-owned community hospitals and health systems.





# ARIZONA FAH MEMBER FACILITIES

			Beds	Employees
<b>REP. TOM O'HALLERAN (D)/ ARIZONA 1ST</b>				
<b>1 HOSPITAL</b>				
Oro Valley Hospital	Oro Valley	Community Health Systems	144	612
<b>REP. MARTHA MCSALLY (R)/ ARIZONA 2ND</b>				
<b>6 HOSPITALS</b>				
Canyon Vista Medical Center	Sierra Vista	RCCCH HealthCare Partners	100	779
Encompass Health Rehabilitation Hospital of Northwest Tucson	Tucson	Encompass Health	60	171
Encompass Health Rehabilitation Institute of Tucson	Tucson	Encompass Health	80	241
Northwest Medical Center	Tucson	Community Health Systems	300	1,696
Palo Verde Hospital	Tucson	Universal Health Services	84	188
St. Joseph's Hospital	Tucson	Tenet Healthcare	486	1,451
<b>REP. RAUL GRIJALVA (D)/ ARIZONA 3RD</b>				
<b>3 HOSPITALS</b>				
Holy Cross Hospital	Nogales	Tenet Healthcare	25	174
St. Mary's Hospital	Tucson	Tenet Healthcare	400	1,407
Yuma Rehabilitation Hospital, a partnership of Encompass Health & YRMC	Yuma	Encompass Health	51	163
<b>REP. PAUL GOSAR (R)/ ARIZONA 4TH</b>				
<b>3 HOSPITALS</b>				
Havasu Regional Medical Center	Lake Havasu City	LifePoint Health	171	691
Valley View Medical Center	Fort Mohave	LifePoint Health	84	291
Western Arizona Regional Medical Center	Bullhead City	Community Health Systems	139	539
<b>REP. ANDY BIGGS (R)/ ARIZONA 5TH</b>				
<b>2 HOSPITALS</b>				
Encompass Health Rehabilitation Hospital of East Valley	Mesa	Encompass Health	60	230
Mountain Vista Medical Center	Mesa	Steward	178	838

BACK TO TOP



# ARIZONA FAH MEMBER FACILITIES

			Beds	Employees
<b>REP. DAVID SCHWEIKERT (R)/ ARIZONA 6TH</b>				
<b>3 HOSPITALS</b>				
Abrazo Scottsdale Campus	Phoenix	Tenet Healthcare	136	365
Encompass Health Rehabilitation Hospital of Scottsdale	Scottsdale	Encompass Health	60	189
Quail Run	Phoenix	Universal Health Services	102	229
<b>REP. RUBEN GALLEG0 (D)/ ARIZONA 7TH</b>				
<b>3 HOSPITALS</b>				
Abrazo Central Campus	Phoenix	Tenet Healthcare	221	768
St. Luke's Behavioral Health Center	Phoenix	Steward	124	349
St. Luke's Medical Center	Phoenix	Steward	219	779
<b>REP. DEBBIE LESKO (R)/ ARIZONA 8TH</b>				
<b>3 HOSPITALS</b>				
Abrazo Arrowhead Campus	Glendale	Tenet Healthcare	217	1,023
Abrazo West Campus	Goodyear	Tenet Healthcare	188	1,005
Encompass Health Valley of The Sun Rehabilitation Hospital	Glendale	Encompass Health	75	177
<b>REP. KYRSTEN SINEMA (D)/ ARIZONA 9TH</b>				
<b>4 HOSPITALS</b>				
Abrazo Arizona Heart Hospital	Phoenix	Tenet Healthcare	59	375
Calvary Addiction Recovery Center	Phoenix	Universal Health Services	68	116
Tempe St. Luke's Hospital (Campus of St. Luke's Medical Center)	Tempe	Steward	87	254
Valley Hospital	Phoenix	Universal Health Services	122	789

^  
BACK  
TO TOP